

[FAQ]

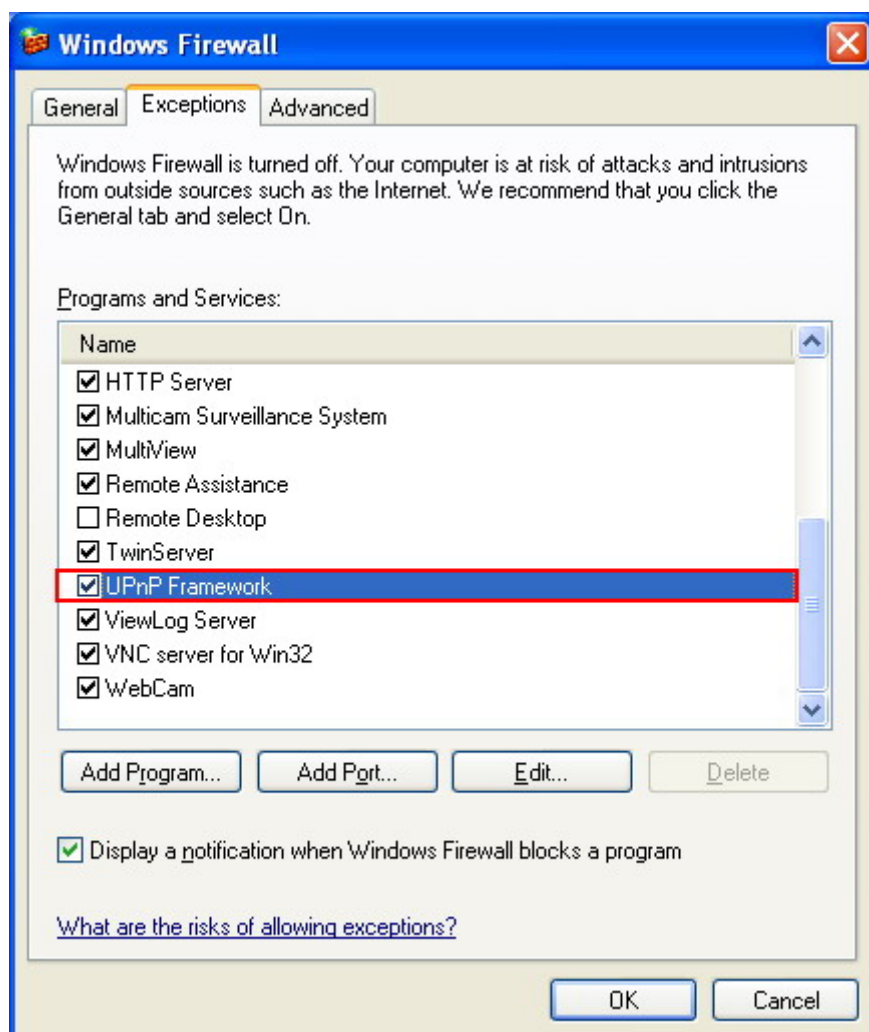
How can I use UPnP function and what is the requirement?

Requirements:

1. Windows XP.
2. GV software version 8.0 or later.
3. Your router must support UPnP function.

Settings:

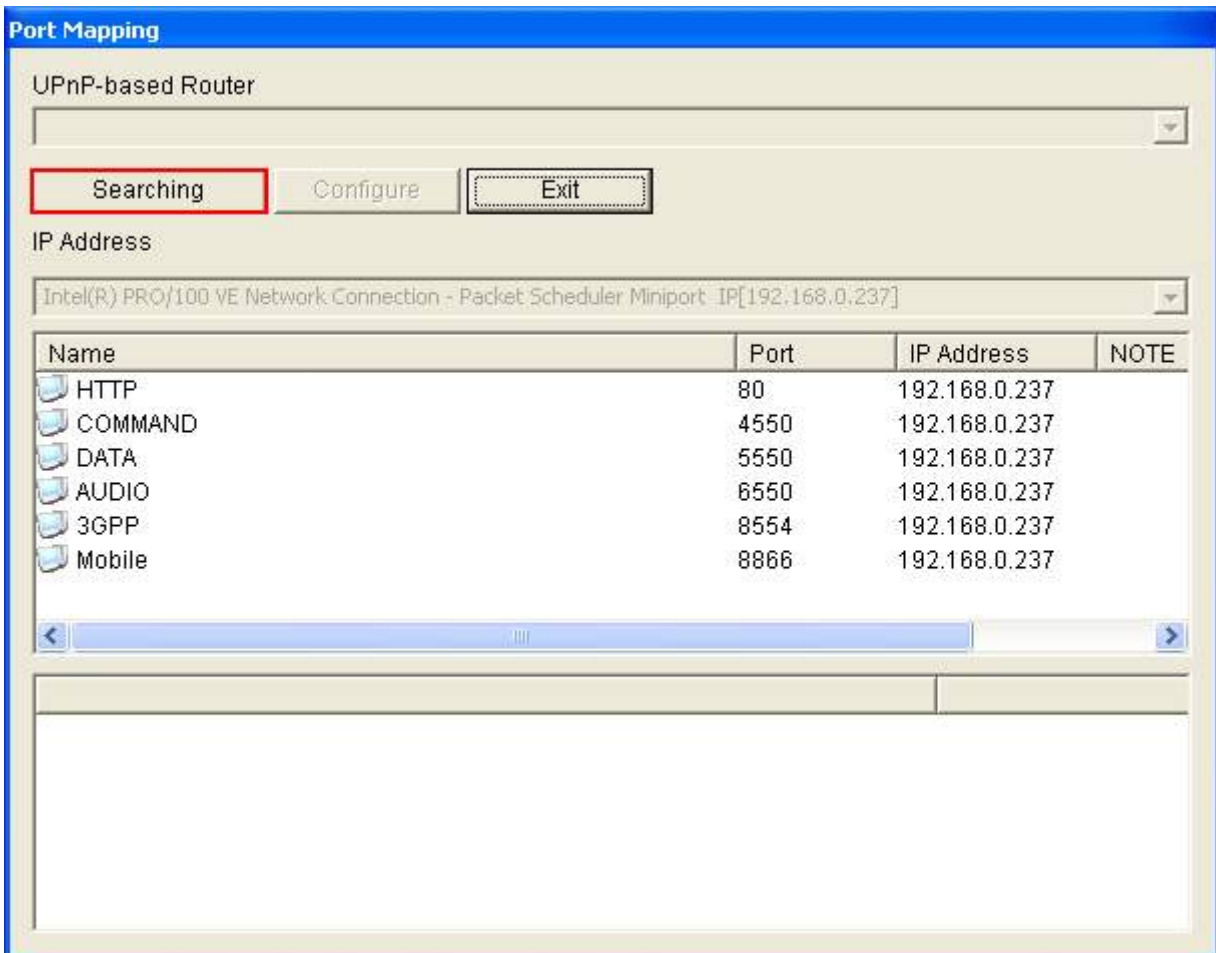
1. First please go to Windows XP firewall>Exceptions and select UPnP Framework.



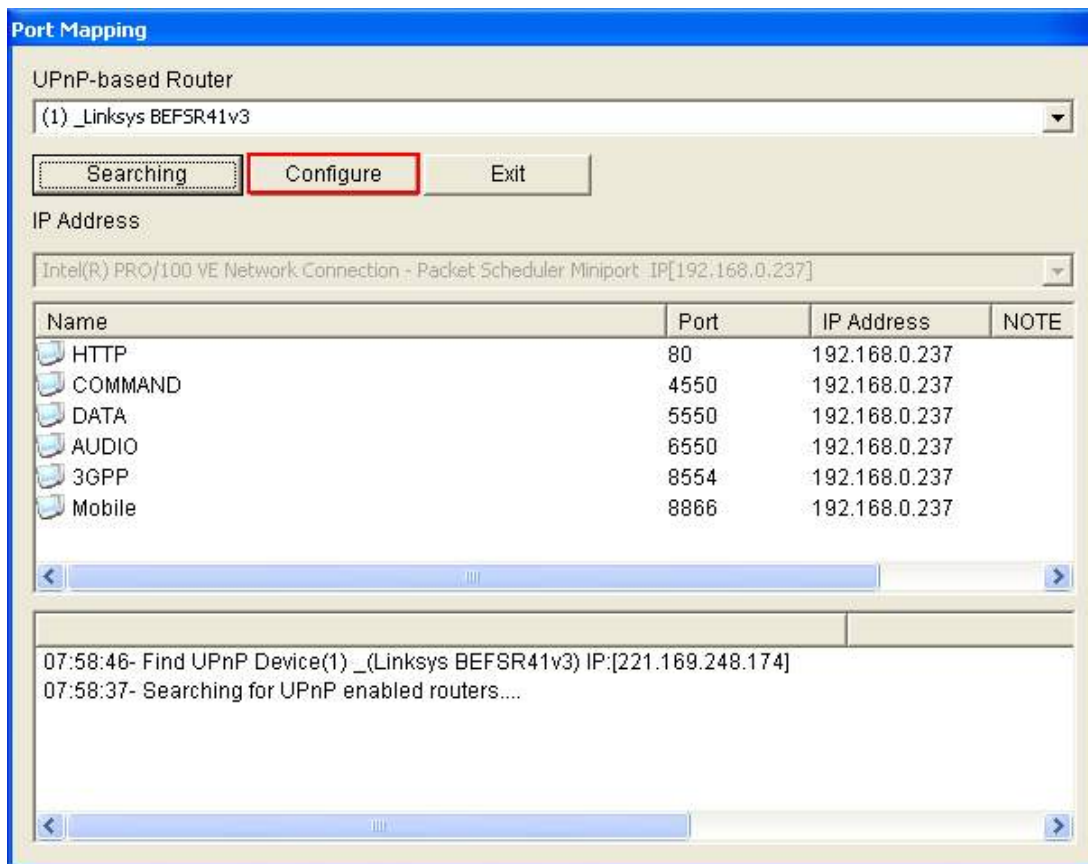
2. Go to webcam server and click on "Detect UPnP".



3. Click on "Searching"



4. Click on "Configure"



5. Then click "Exit" to complete the setting.

