

[FAQ]

Why doesn't Remote E-map update new map information?

Article ID: GV03-14-05-14-m

Release Date: 05/14/2014

Applied to

Remote E-Map

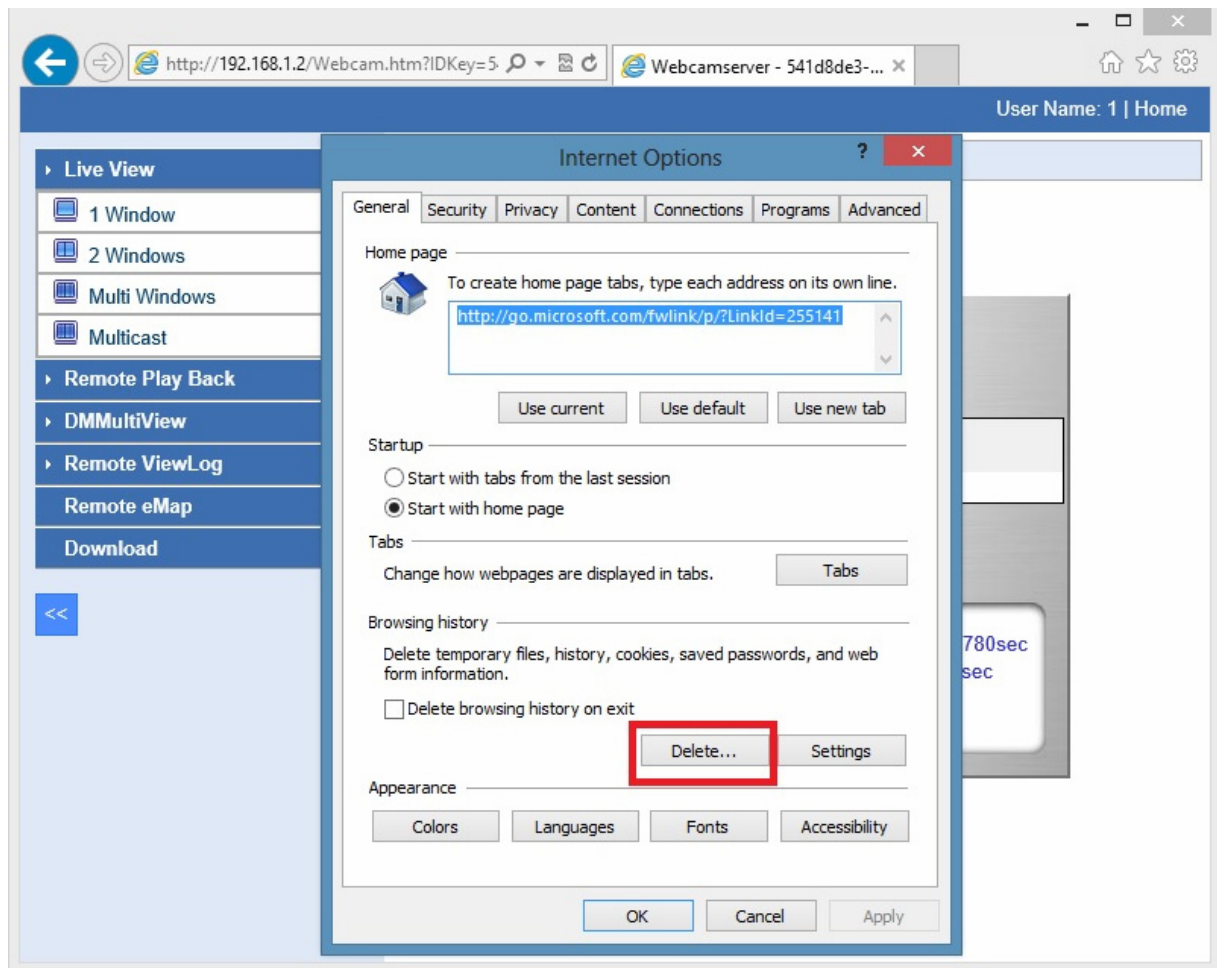
Question

After I made changes to E-Map on GV-System, why can't I see the changes when using Remote E-Map?

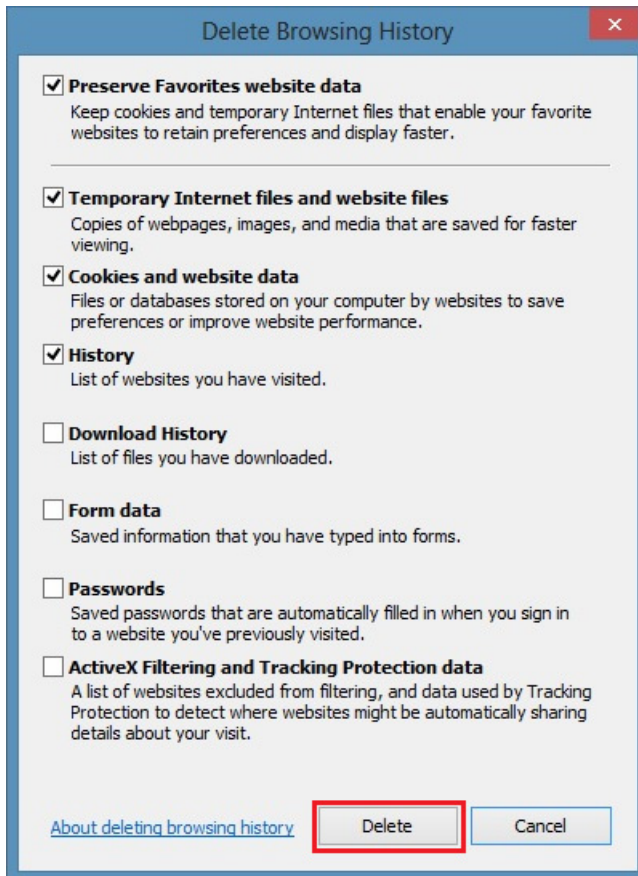
Answer

The problem occurs because the browser cache has not been cleared; therefore, Remote E-Map displays maps from the cache instead of downloading them from the server. To solve this problem, follow the instructions to clear the browser cache of Internet Explorer.

1. In Windows, select **Control Panel**, select **Network and Internet**, select **Internet Options** and select **Delete**.



2. Delete the cache and temporary Internet files.



3. Refresh the link to see the changes.