

[FAQ]

Why is there a display error on my DMMultiView?

Article ID: GV1-14-07-24-c

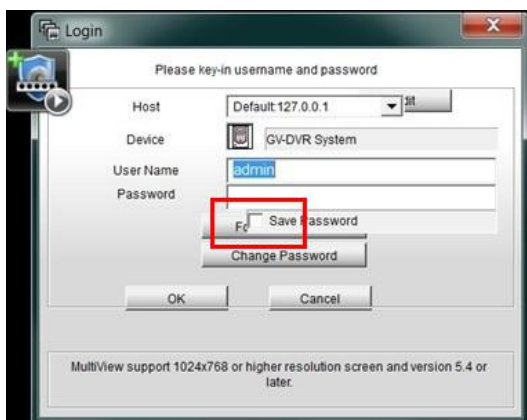
Release Date: 07/24/2014

Applied to

DMMultiView (GV-MultiView Viewer)

Question

Why is there a display error on my DMMultiView?



Answer

The texts on Multi View viewer are disrupted because the Windows font size setting has been changed from the default setting.

To solve this problem, you can:

- change the monitor resolution to 1024 x 760 or higher
- change the font size on Windows to the default size

