

[FAQ]

How do I connect GV-SD200 with Multi View (DMMultiView)?

Article ID: GV2-2014-03-07-t

Release Date: 03/07/2014

Applied to

Multi View (DMMultiView)

Question

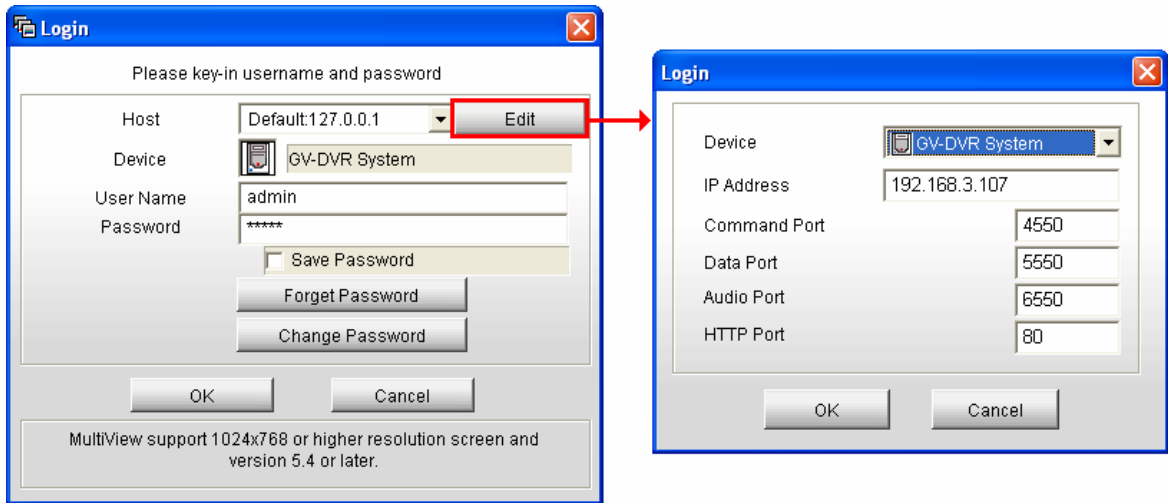
How do I connect GV-SD200 with Multi View (DMMultiView)?

Answer

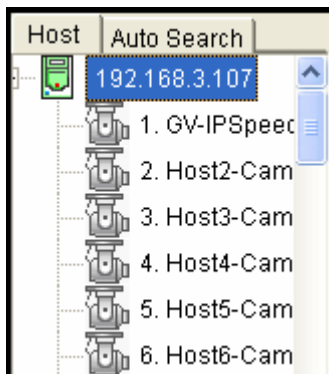
GV-SD200 cannot be connected to Multi Viewer directly. You will need to add the GV-SD200 to a GV-System first, and then add the GV-System to the Multi View. Make sure the Webcam Server on the GV-System is enabled.

Adding GV-System to Multi View

1. In the login dialog box, click the **Edit** button and type the IP address of the GV-System.



2. Type the **User Name** and **Password** of the GV-System.
3. Click **OK** to login. The GV-System will be listed in the host list.



4. You can drag and drop the GV-SD200 in the host list to the desired channels on the Multi View.