

[FAQ]

How do I run Remote ViewLog using a non-administrator account?

Article ID: GV2-14-02-10-t

Release Date: 02/10/2014

Applied to

Remote ViewLog V8.5.7.0 or later

Question

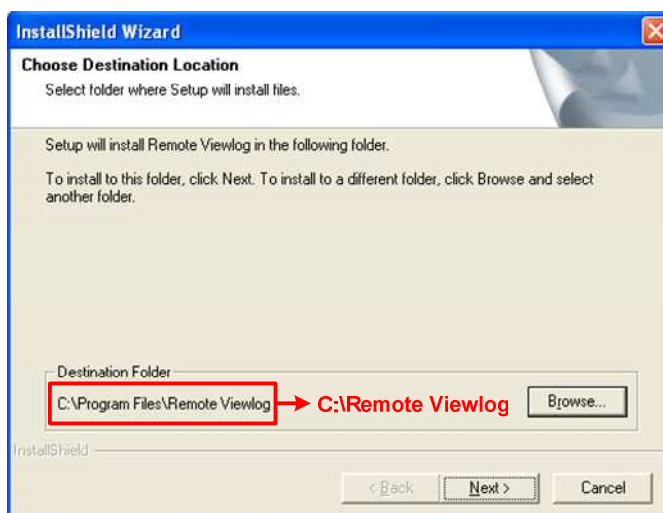
How do I run Remote ViewLog using a non-administrator account?

Answer

In order to run Remote ViewLog without administrator rights, follow the 2 procedures below.

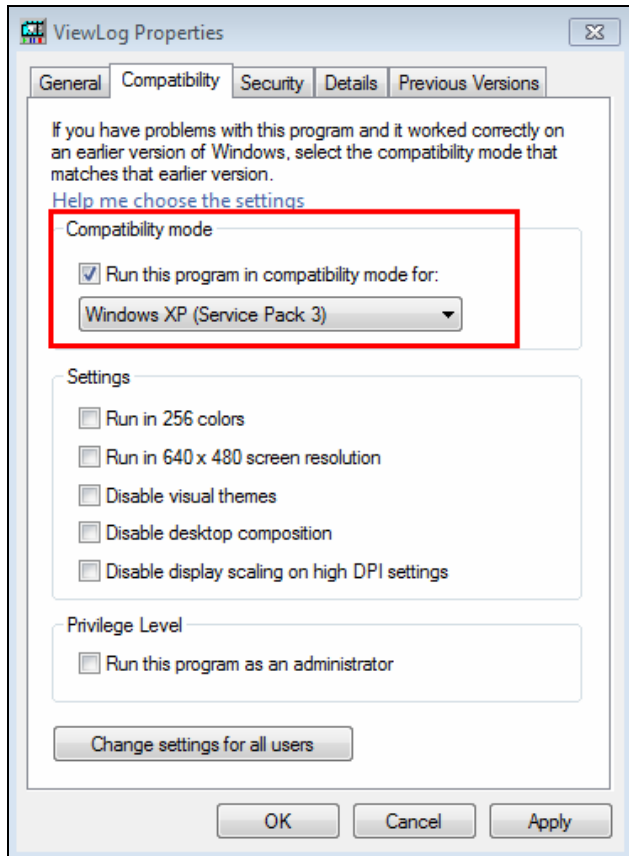
Install Remote ViewLog in the root folder of a hard drive

Without administrator rights, the user account may not have permission to access the folder where Remote ViewLog is installed in. Reinstall the program and change the default destination folder to a root directory such as **C:** or **D:**.



Change the compatibility mode of Remote ViewLog

1. Locate the main program file of Remote ViewLog in the folder where it's installed in. For example: C:\Remote Viewlog\Viewlog500.exe
2. Right-click the program file, select **Properties** and click the **Compatibility** tab.
3. Under Compatibility mode, select **Run this program in compatibility mode for** and set the drop-down list to **Windows XP (Service Pack 3)**.



4. Click **Apply**.