

[FAQ]

How do I move Remote ViewLog window to another monitor?

Article ID: GV1-08-09-c

Release Date: 08/09/2013

Applied to

GV-Remote ViewLog V.8.3.2.0 or later

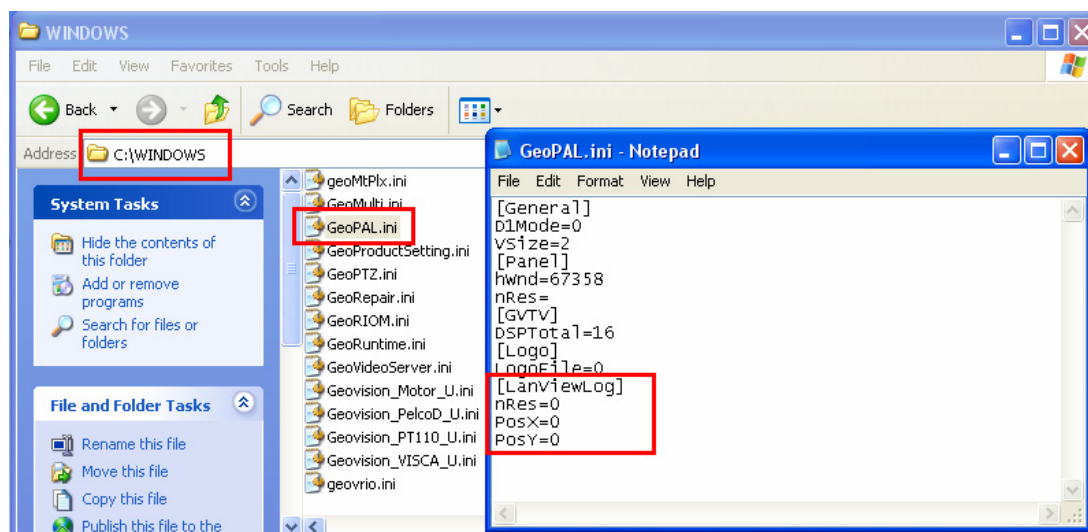
Question

How do I move Remote ViewLog window to another monitor?

Answer

Currently, the Remote ViewLog player does not offer any function for changing its display position. However, you can still change the display position by editing the configuration file. Follow the steps below:

1. From the C:\Windows folder, double-click the **GeoPal.ini** file.



2. Locate the section **[LanViewLog]**. You will find the **PosX** and **PosY** variables, which signify Remote ViewLog's display position in terms of monitor resolution. The default PosX = 0 and PosY = 0 means that the window is displayed at the top left corner of the monitor. To change the display position, re-define the PosX and PosY values.
3. Save the file and re-launch Remote ViewLog. The change takes effect immediately.