

## POS System Connection

POS systems could come in different forms. In this manual, POS systems refer to those with receipt printers externally connected. It is also important to identify the interface on your POS system used to connect that system to a receipt printer. It should be either DB9 or DB25 interface.

### System Requirements

**Hardware:** GV-Data Capture Box

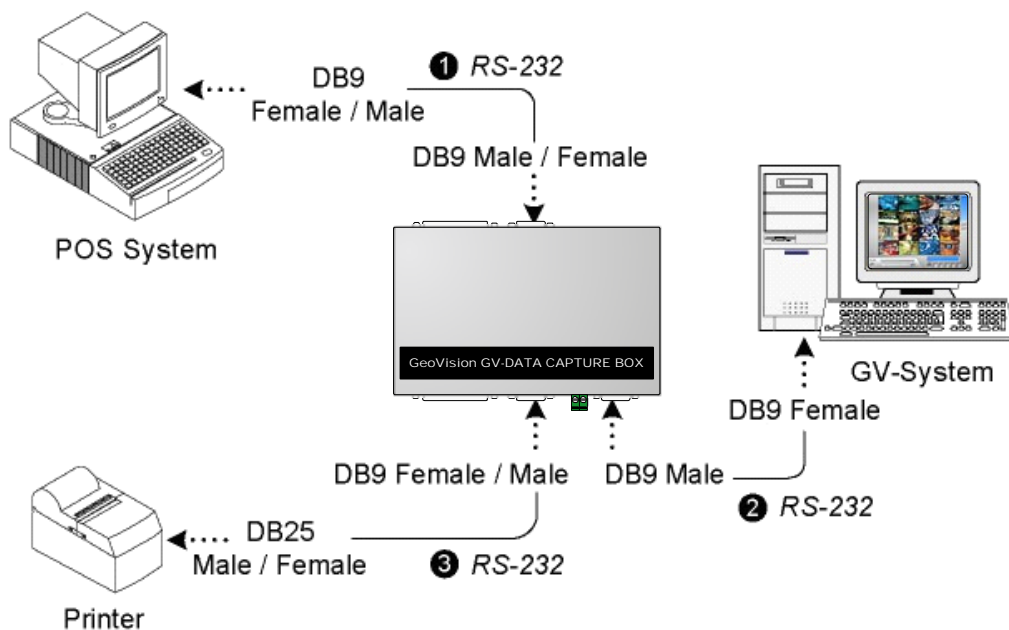
**Software:** Version 6.0.2.0 or above

### Connecting DB9-Interface POS System

For the diagram below, we use a **POS system using a DB9-DB25 cable** for example. Depending on the POS system interface, find out the **DB9 Female** or **DB9 Male** connector on the GV-Data Capture Box for connection.

1. Connect the GV-Data Capture Box as illustrated below.

#### POS system using a DB9-DB25 cable



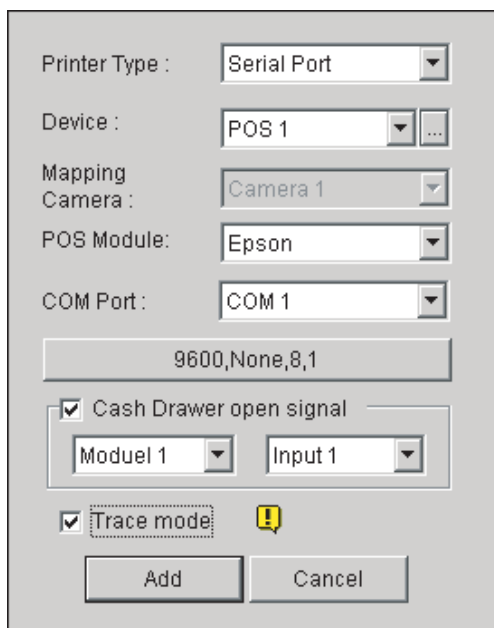
**Figure 1**

*\*The RS-232 cables (1) (2) are supplied with the GV-Data Capture Box.*

*\*The RS-232 cable (3) is supplied with the POS system.*

*\*The physical distance between the POS system and GV-System should be less than 10 meters (32 ft).*

2. Run the GV-System.
3. Click the **Configure** button, point to **POS Application Setting**, and select **POS Device Setup**. This displays the POS Server Setup dialog box.
4. Click the **New** button to display the COM setting dialog box as shown below.



**Figure 2**

- **Printer Type:** Select **Serial Port** for this application.
- **Device:** Assign the POS system to a camera channel. POS 1 displays images and data on the Camera 1 channel; POS 2 on the Camera 2 channel, and so on. Click the button [...] next to the item to rename the device.
- **POS Module:** Select the printer connected to the POS system. If it's not Epson, select **General** for other brands.
- **COM Port:** Select the COM port connected to the POS system.

- **The parameter button:** Click this button to configure the following parameters or keep default settings.
    - ◆ **Baud Rate:** Select the baud rate corresponding to that of the POS system.
    - ◆ **Data Bits:** Select the data bit corresponding to that of the printer.
    - ◆ **Parity:** Select **None** for the serial POS system.
    - ◆ **Stop Bits:** Select the stop bit corresponding to that of the printer.
  - **Cash Drawer Open Signal:** This option is only available when an input module is configured in the main system. Assign the input module connected to the cash drawer. Every time when the cash drawer is open, it will be recorded in System Log for later retrieval.
  - **Trace Mode:** Check this option only after getting the recommendation from our technical support staff.
5. After above settings, click **Add** to add the POS system to the GV-System.