

## Cash Register Connection

In this document, cash registers refer to those with receipt printers internally connected. Cash registers may not be integrated to GV-Systems, unless with the following characteristics. Please check these characteristics before actually connecting your cash register to the GV-System.

- Check if your cash register has an output port for a printer.
- Connect a receipt printer to the output port and see if it functions well. If it does, the integration is then possible.

It is also important to identify the interface on your cash register that is used to connect a receipt printer. It should be either DB9 or DB25 interface.

---

**Note:** If display errors happen when connecting the receipt printer to the cash register (e.g. drop caps, character display errors), the same problems would remain when the GV-System overlays data on video footage.

---

## Requirements

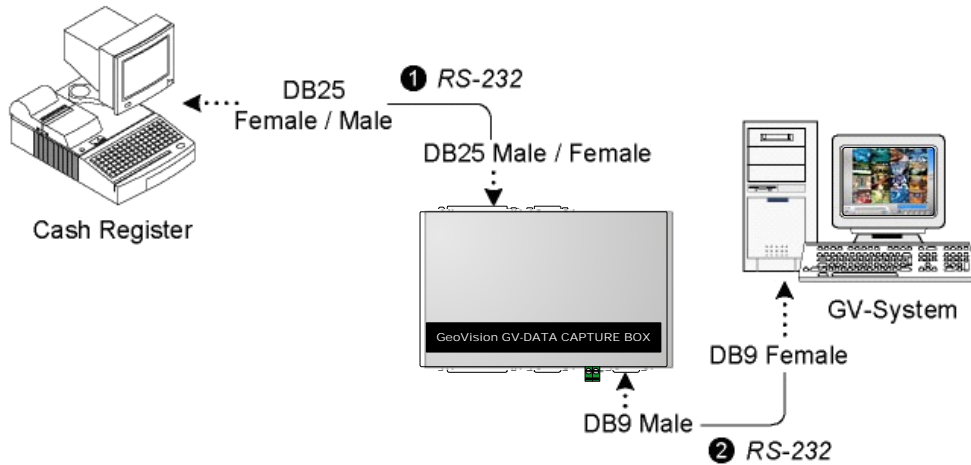
**Hardware:** GV-Data Capture Box

**Software:** V6.0.2.0 or above

## Connecting DB25-Interface Cash Register

Depending on the cash register interface, find out the **DB25 Female** or **DB25 Male** connector on the GV-Data Capture Box for connection.

1. Connect the GV-Data Capture Box as illustrated below.

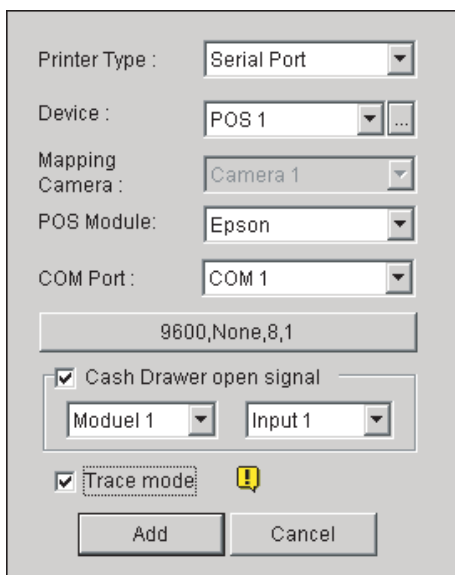


**Figure 1**

*\*The RS-232 cables (1) (2) are supplied with the GV-Data Capture Box.*

*\*The physical distance between the cash register and GV-System should be less than 10 meters (32 ft).*

2. Run the GV-System.
3. Click the **Configure** button, point to **POS Application Setting**, and select **POS Device Setup**. This displays the POS Server Setup dialog box.
4. Click the **New** button to display the COM setting dialog box as shown below.



**Figure 2**

- **Printer Type:** Select **Serial Port** for this application.
  - **Device:** Assign the cash register to a camera channel. POS 1 displays images and data on the Camera 1 channel; POS 2 on the Camera 2 channel, and so on. Click the button [...] next to the item to rename the device.
  - **POS Module:** Select the printer connected to the cash register. If it's not Epson, select **General** for other brands.
  - **COM Port:** Select the COM port connected to the cash register.
  - **The parameter button:** Click this button to configure the following parameters or keep default settings.
    - ◆ **Baud Rate:** Select the baud rate corresponding to that of the cash register.
    - ◆ **Data Bits:** Select the data bit corresponding to that of the printer.
    - ◆ **Parity:** Select **None** for the serial cash register.
    - ◆ **Stop Bits:** Select the stop bit corresponding to that of the printer.
  - **Cash Drawer Open Signal:** This option is only available when an input module is configured in the main system. Assign the input module connected to the cash drawer. Every time when the cash drawer is open, it will be recorded in System Log for later retrieval.
  - **Trace Mode:** Check this option only after getting the recommendation from our technical support staff.
5. After above settings, click **Add** to add the cash register to the GV-System.