

[FAQ]

What is the Remote Playback Server?

Article ID: GV11-11-17-j

Release Date: 11/17/2011

Applied to

GV-System versions earlier than V8.5

Question

The Remote Playback Server is included in the software DVD. What is the Remote Playback Server function for?

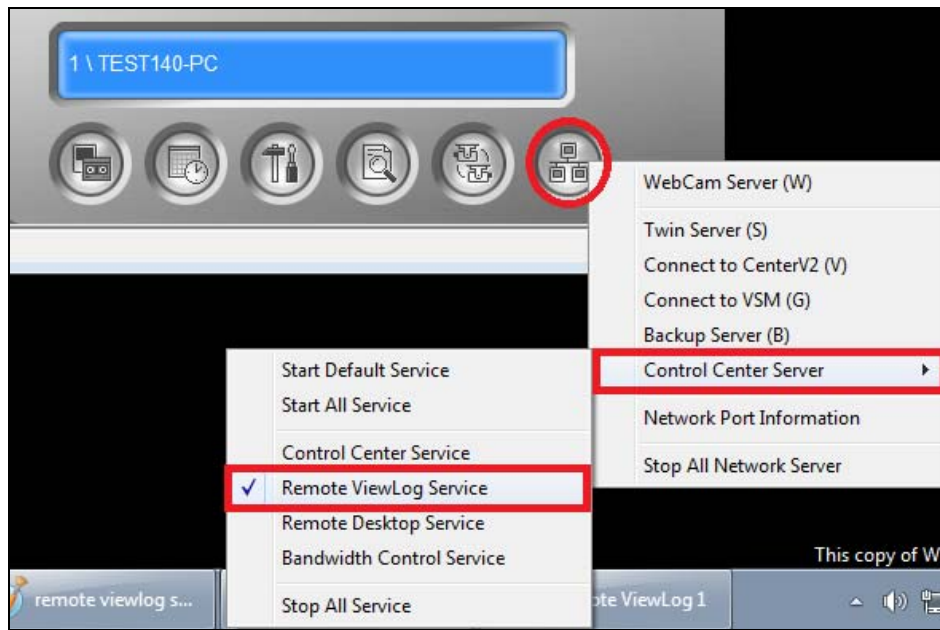
Answer

The Remote Playback Server is installed on a client PC to download and play back video files from GV-Systems. **Starting from V8.5, GV-System will not support Remote Playback Server anymore.** Instead, users can use the Remote ViewLog to play back the recorded video files over network.

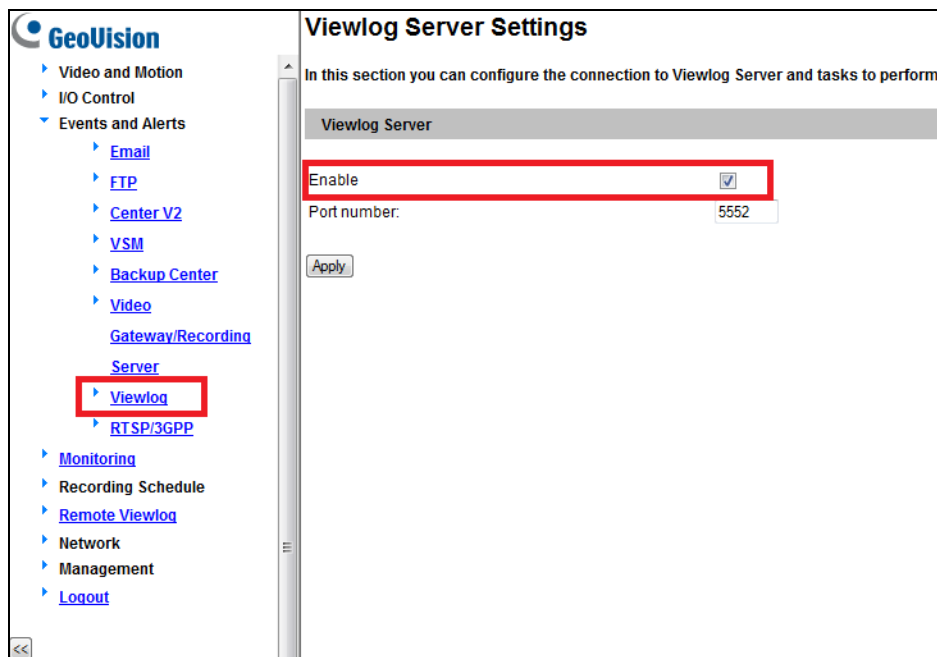
How to use Remote ViewLog

Before using the Remote ViewLog, you have to enable the following functions to retrieve the recorded video files from a remote GV IP device or GV-System.

- **GV-System (DVR): Enable Remote ViewLog Service on Control Center Server**

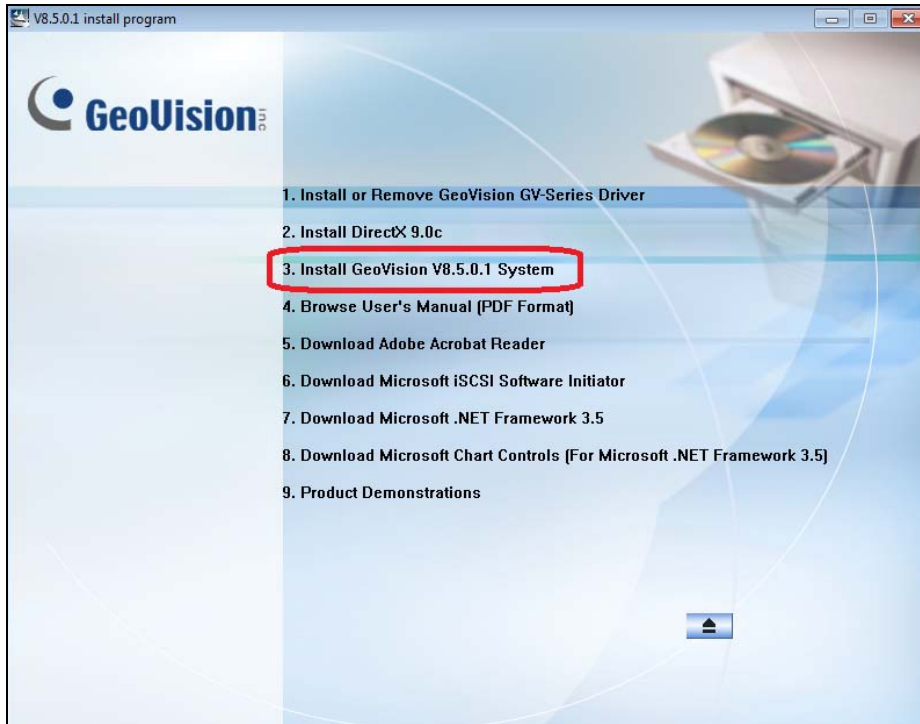


- **GV IP device: Enable the ViewLog Server**



To install the Remote ViewLog on a client PC:

1. Insert the Software DVD, the Install Program window pops up automatically.



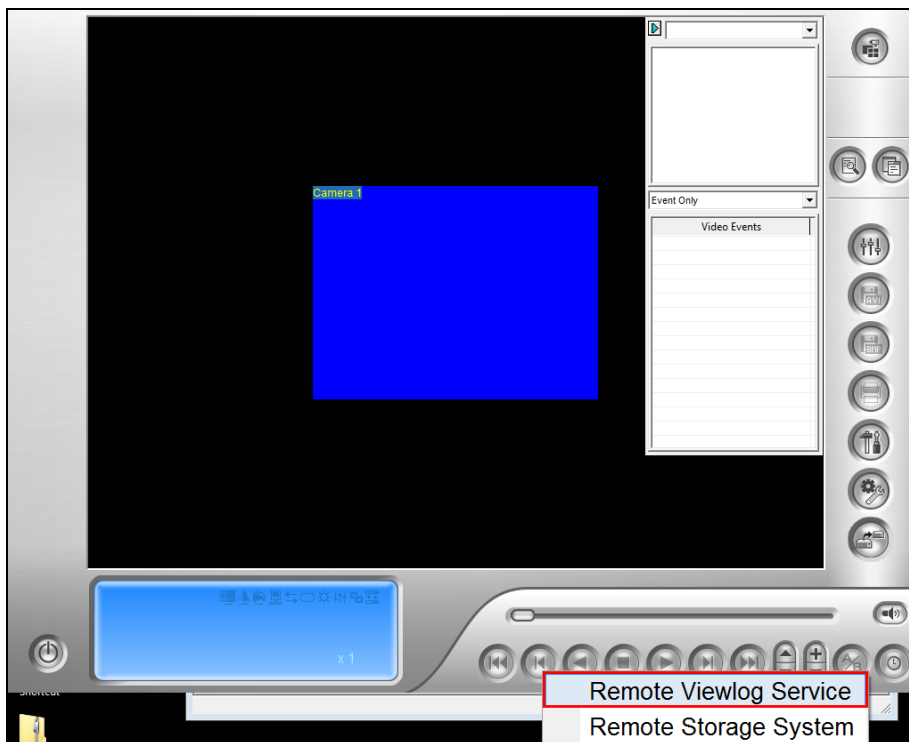
2. Click **Install GeoVision xxx System**. The following window appears.



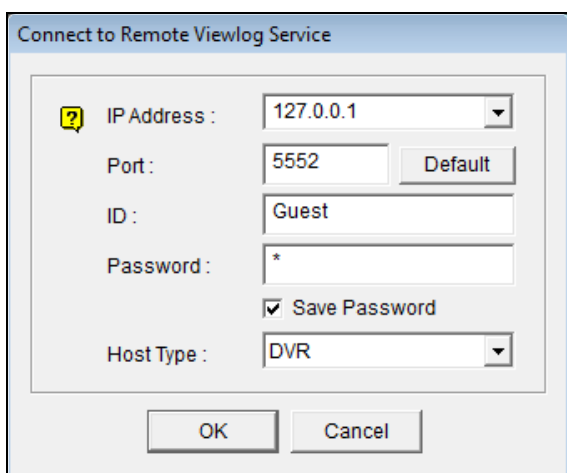
3. Select **GeoVision Remote ViewLog** and follow the on-screen instructions to complete the installation.

To use the Remote ViewLog to play back recorded video files over network:

1. Start the Remote ViewLog and select **Remote ViewLog Service**.



2. Type the IP address, ID and Password of the remote video device. Keep the default port as **5552** or modify it if necessary.



3. In the Host Type, select **DVR** or **GV-IP Device**.
4. Click **OK**.

When the connection is established, you will see the events of the remote video device appearing on the Event List.