

Watermark Protection

Article ID: GV01-09-06-04

Release Date: 06/04/2009

The GV-System can embed a digital watermark in the video stream for the purpose of authentication. The watermark is an encrypted, digital signature embedded in the video stream during the compression stage, protecting the video from the moment of creation. Watermarking ensures that an image has not been edited or damaged after it has been recorded.

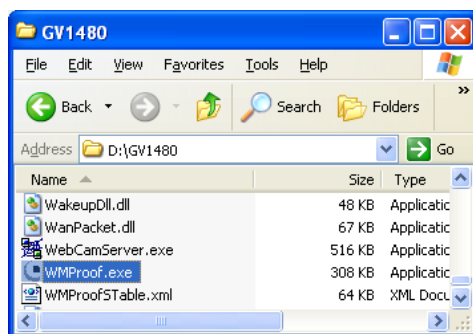
The Watermark Mark Proof is a watermark-checking program. It can verify the authenticity of the recording before you present it in court.

Activating Watermark Protection

Click the **Configure** button on the main screen, click **General Setting**, click **System Configure**, and select **Use Digital Watermark Protection** in the System Configure dialog box. The GV-System will digitally sign video as it is recorded.

Running the Watermark Mark Proof

1. Go to the system folder, and run **WMPProof.exe**.

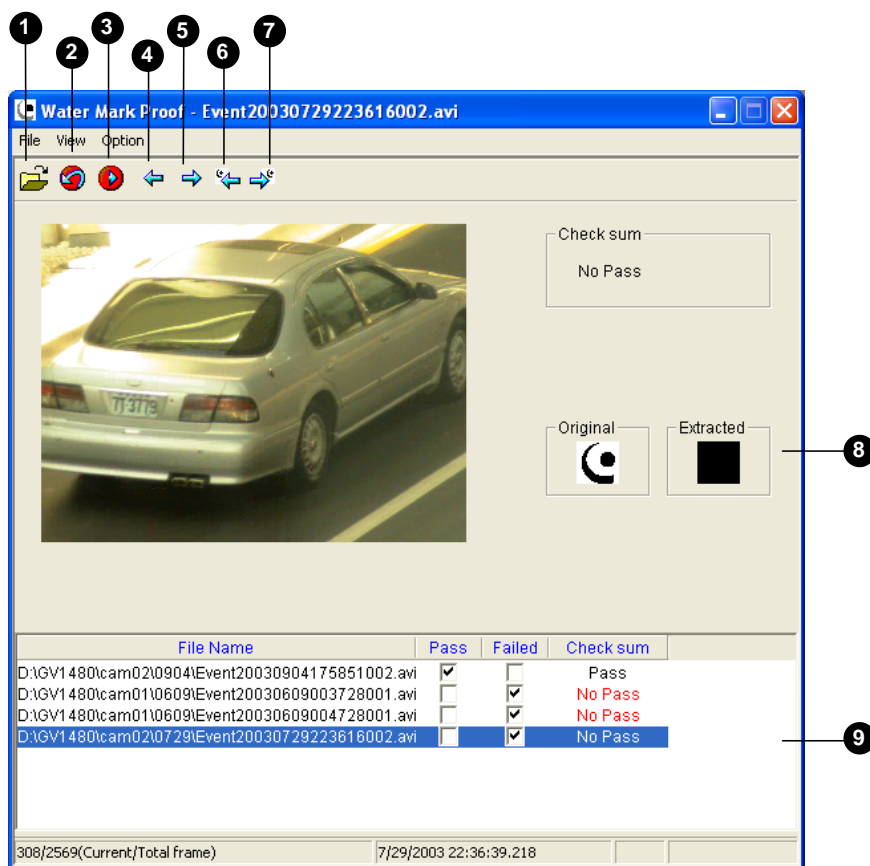


2. In the Water Mark Proof window, click **File** from the menu bar, select **Open** and locate the video source. The selected recording is then listed on the window. Alternatively, you can drag the recording directly from the storage folder to the window.

- If the recording is unmodified, a message **Pass** would appear. If the recording is being modified, a message **No Pass** would appear. To review the recording, double-click the listed file on the window.

Note: If you select the recording without the **Use Digital Watermark Protection** function activated, the proof result is No Pass.

The Water Mark Proof Window



The controls in the window:

| No. | Name | Description |
|-----|----------------------------|---|
| 1 | Open File | Opens the recording for authentication. |
| 2 | First Frame | Goes to the first frame of the file. |
| 3 | Play | Plays the file. |
| 4 | Previous Frame | Goes to the previous frame of the file. |
| 5 | Next Frame | Goes to the next frame of the file. |
| 6 | Previous Watermarked Frame | Goes to the previous frame that contains watermark. |
| 7 | Next Watermarked Frame | Goes to the next frame that contains watermark. |

| | | |
|---|------------------------|--|
| 8 | Original vs. Extracted | The Extracted icon should be identical with the Original icon. If not, it indicates the recording has been tampered. |
| 9 | File List | Displays the proof results. |
