

## [FAQ]

### How do I edit the recording path in the GV-System?

Article ID: GV13-04-12-k

Release Date: 04/12/2013


#### Applied to

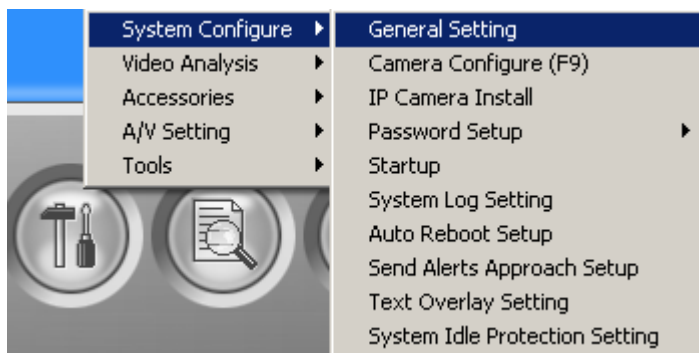
GV-System V8.5.0.0 and later

#### Question

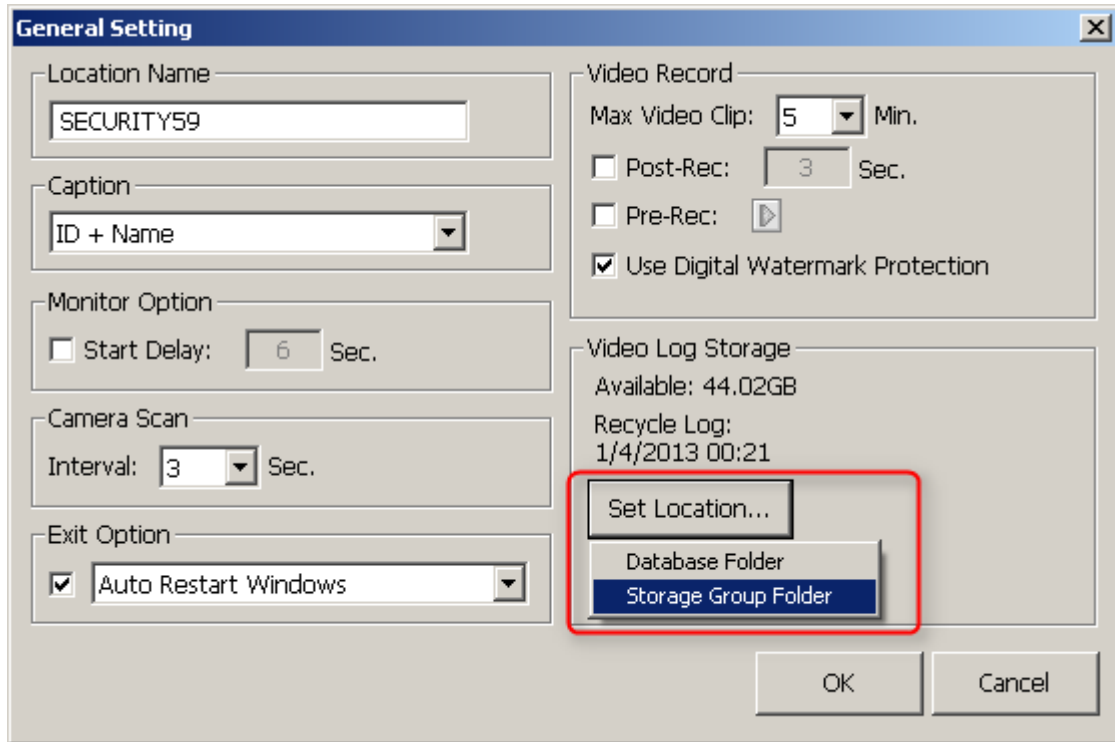
How do I edit the recording path in the GV-System?

#### Answer


1. Click the **Configure** button  on the main system.
2. Select **System Configure** and select **General Setting**. The General Setting dialog box appears.




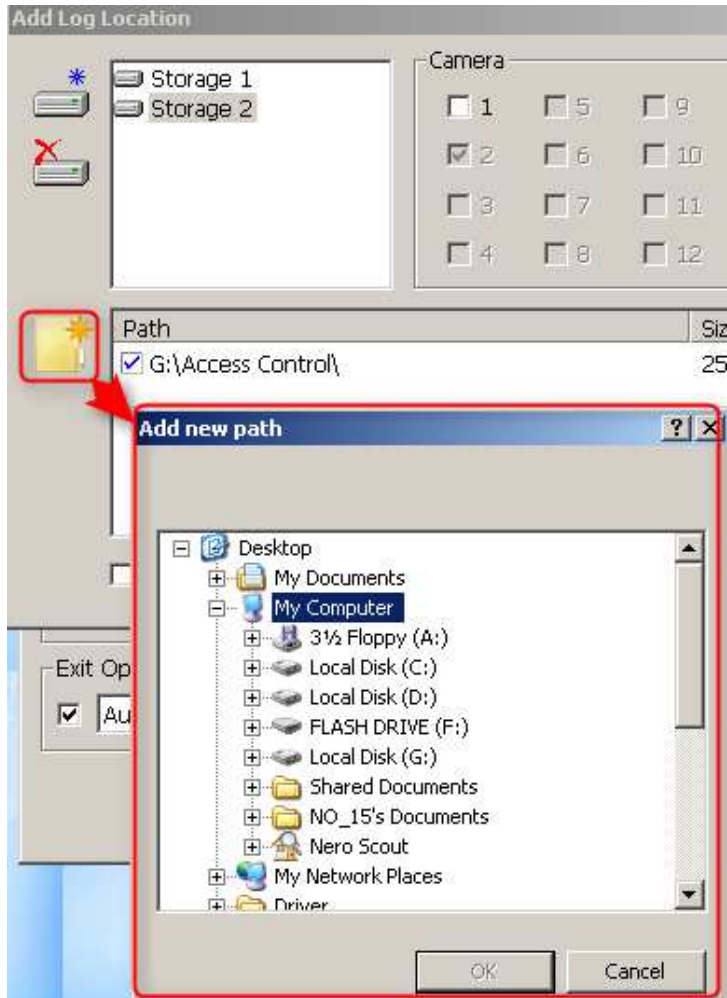
3. Click the **Set Location** button and select **Storage Group Folder**. The Add Log Location dialog box appears.




4. To add a new storage group:

A. Click the **Add Storage Group** icon  and select the cameras to be added in this group.

B. Click the **Add New Path** icon  and select a desired path to store the recording files created by the new added storage group.



5. To change the Storage 1 recording path:

A. Click the path of Storage 1 and then click the **Remove Path** icon .

B. Click the **Add New Path** icon  and select a desired recording path.

