

How to Upgrade GV-System to the Latest Version

Article ID: GV28-10-06-17

Release Date: 06/17/2010

Follow the steps below to upgrade the GV-System to the latest version and restore your previous database.

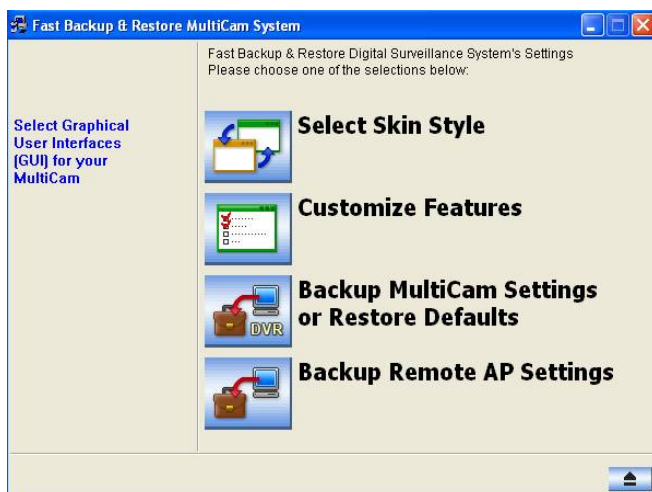
The **GV-System** is GeoVision analog and digital video recording Software. In most of documents, the GV-System also refers to **Multicam System**, **GV-NVR System** and **GV-Hybrid DVR System** at the same time.

Applied to

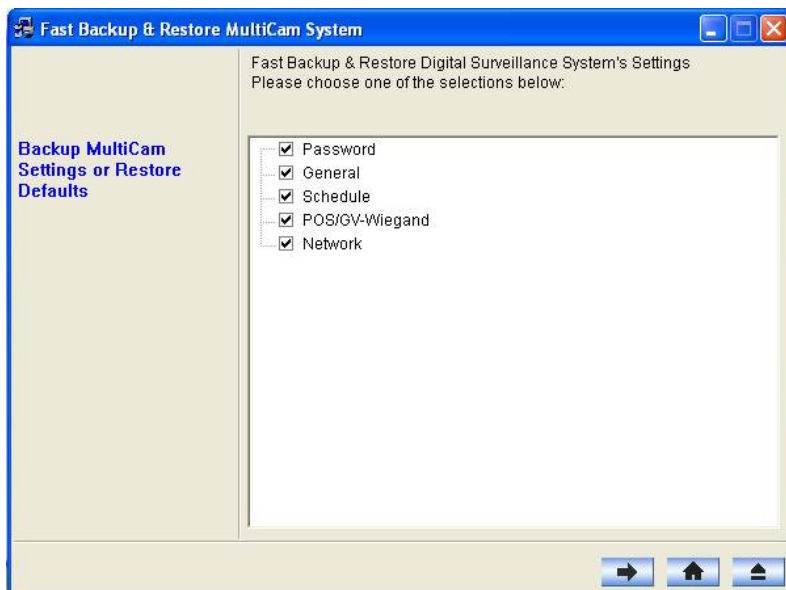
GV-System Version 8.0 and later


Backing up the Current Configuration Settings

1. Install **Fast Backup and Restore Main System** from the GV-System Software DVD and start the program. This window appears.



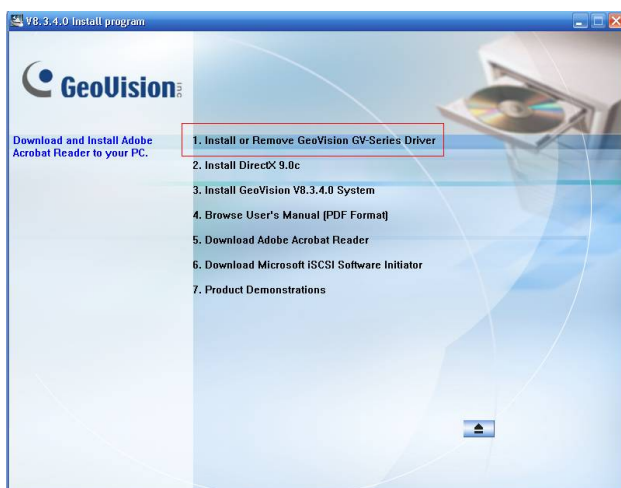
2. Click **Backup MultiCam Settings** and select **Backup Current System**. This window appears. Select the items you desire to back up.



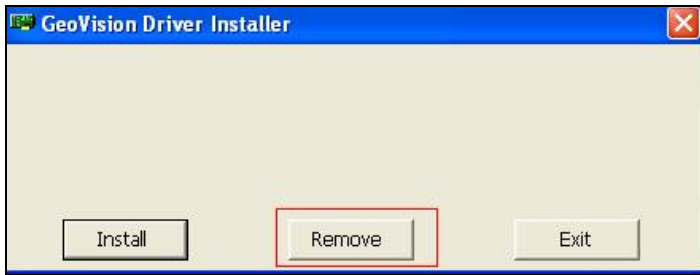
3. Click  , and specify the storage path for the backup file. The file name is XXX.exe.

Installing the Latest Version and Restoring the Previous Database

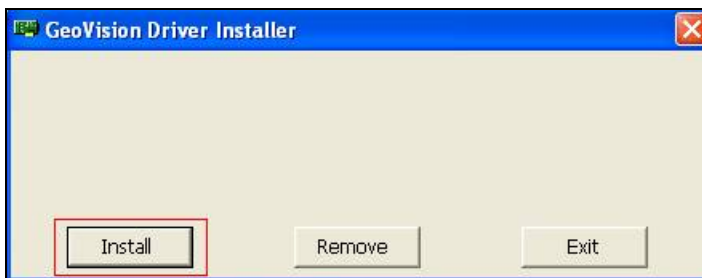
1. Uninstall the current version of GV-System.
2. Uninstall the current version of the Card driver and install the latest version of it.
 - A. Insert the software DVD to the computer. This window appears. Select **Install or Remove GeoVision GV-Series Driver**



- B. Select **Install or Remove GeoVision GV-Series Card Drivers** and select **Remove**.

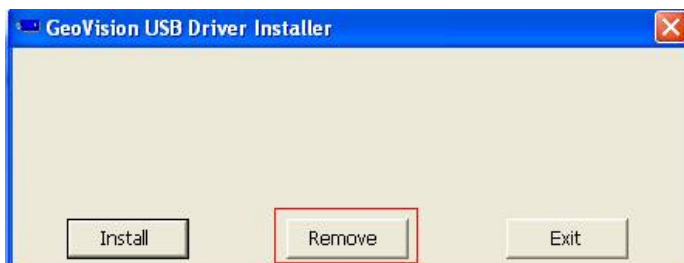


- C. Select **Install or Remove GeoVision GV-Series Card Drivers** and select **Install**.



3. Uninstall the current version of the USB Device driver and install the latest version of it.

- A. Select **Install GeoVision USB Device Drivers** and select **Remove**.

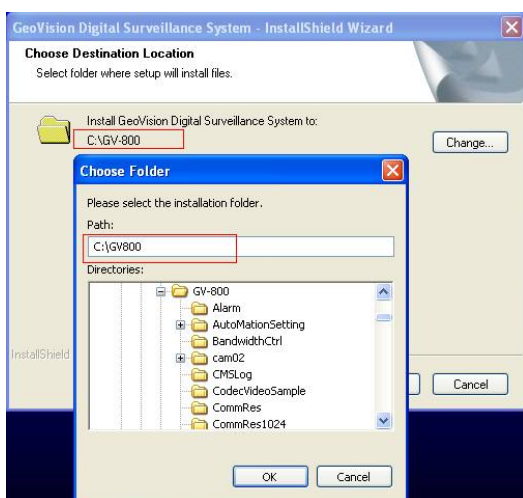


- B. Select **Install GeoVision USB Device Drivers** and select **Install**.



- To install the latest version of GV-System, select **Install GeoVision Vxxxx System** and select **GeoVision Main System**.

To restore the database, ensure the **folder name** and **folder path** must be the same as the previous version. Before version 8.3.4, the default installation path is C:\GVxxx; however, from version 8.3.4 and later, the default installation path is changed to C:\GV-xxx (there is a dash "-" between GV and capture card model number). If your previous GV-System is installed to the default path C:\GVxxx, click **Change** when the following **Choose Destination Location** dialog box appears. Then modify C:\GV-xxx to C:\GVxxx for restoring your previous database.



- Start the GV-System. The version upgrade is complete.

Note: You may not upgrade the GV-System by using the Software DVD, but by using the upgrade or patch download link provided by GeoVision. In this case, you should locate related executive programs from folders to start.

- To uninstall the current version of the Card driver and install the new version, run **DrvInst.exe**.
- To uninstall the current version of the USB Device driver and install the new version, run **GvUsb.exe**.
- To install the latest version of GV-System, run **setup.exe**.