

[FAQ]

How do I use the RTSP protocol to connect GV IP devices?

Release Date: 11/08/2010

Applied to

GV-System Version 8.3.2 and later
GV-VS04A Version 1.20 and later
GV-VS12 Version 1.03 and later
GV-VS02A Version 1.03 and later
GV-IPCam Version 1.09 and later
GV-IPCam H.264 Version 1.05 and later
GV-Compact DVR V2 Version 1.04 and later

Question

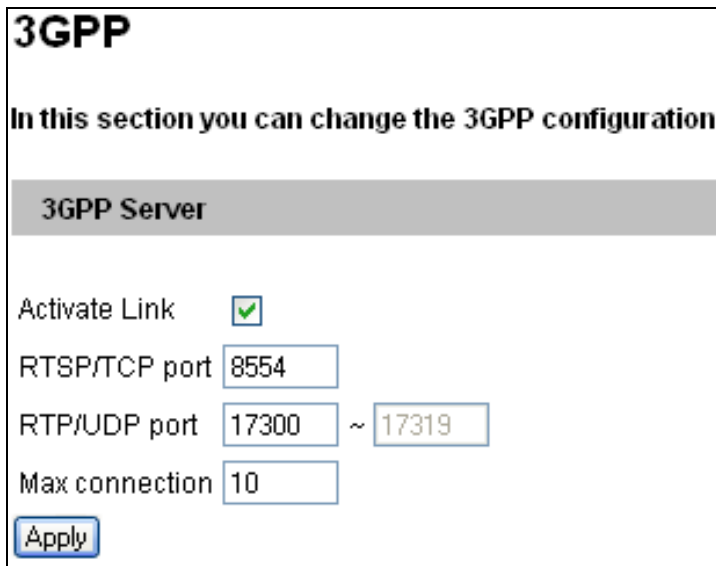
How do I use the RTSP protocol to connect GV IP devices to the GV-System?

Answer

To use the RTSP protocol to connect GV IP devices to the GV-System, you have to configure the RTSP Server on these devices' Web interface. And then type the RTSP link address in the RTSP Command dialog box on the GV-System.

How to do

1. On the GV IP device's Web interface, activate the RTSP/3GPP Server. Click **Apply**.



3GPP

In this section you can change the 3GPP configuration

3GPP Server

Activate Link

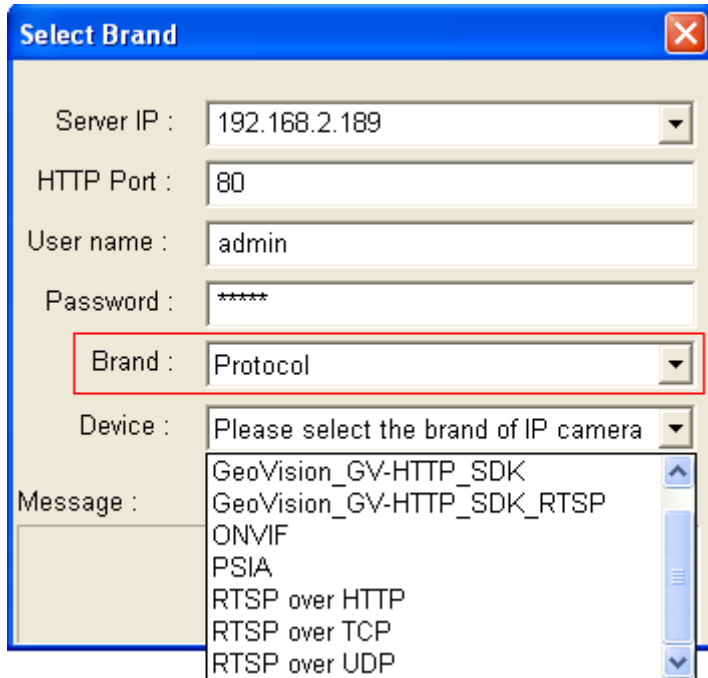
RTSP/TCP port

RTP/UDP port ~

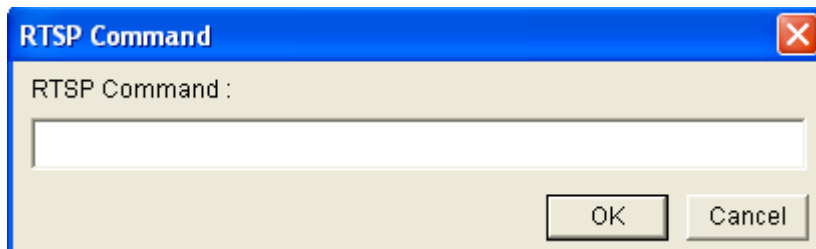
Max connection

- **Activate Link:** Enable the RTSP/3GPP service.
 - **RTSP/TCP Port:** Keep the default value 8554, or modify it if necessary.
 - **RTP/UDP Port:** Keep the default range from 17300 to 17319, or modify it if necessary. The number of ports for use is limited to 20.
 - **Max Connection:** Set the maximum number of connections to the IP device.
2. On the main screen of GV-System, click the **Configure** button, select **General Setting**, select **Camera Audio Install** and click **IP Camera Install**.
 3. Click the **Add Camera** button to manually add an IP device. The Select Brand dialog box appears.
 4. Type the IP address, username and password of the IP device. Modify the default HTTP port if necessary.

- From the **Brand** drop-down list, select **Protocol**.



- From the **Device** drop-down list, select **RTSP over TCP** or **RTSP over UDP**. The RTSP Command dialog box appears.



- Type the RTSP link address in the RTSP command box. Click **OK**.

RTSP://<IP of the GV IP Device:8554/<CH No.>.sdp

For example, RTSP://192.168.3.111:8554/CH001.sdp