

## [FAQ]

# How to use GV-IP Device Utility to upgrade firmware and manage multiple GV-IP Devices simultaneously?

**Article ID: GV13-02-26-k**

**Release Date: 02/26/2013**

### Applied to

GV-Compact DVR V3 Series

GV-IPCAM H.264 Series

GV-Video Server (GV-VS04H, GV-VS11, GV-VS12, and GV-VS14)

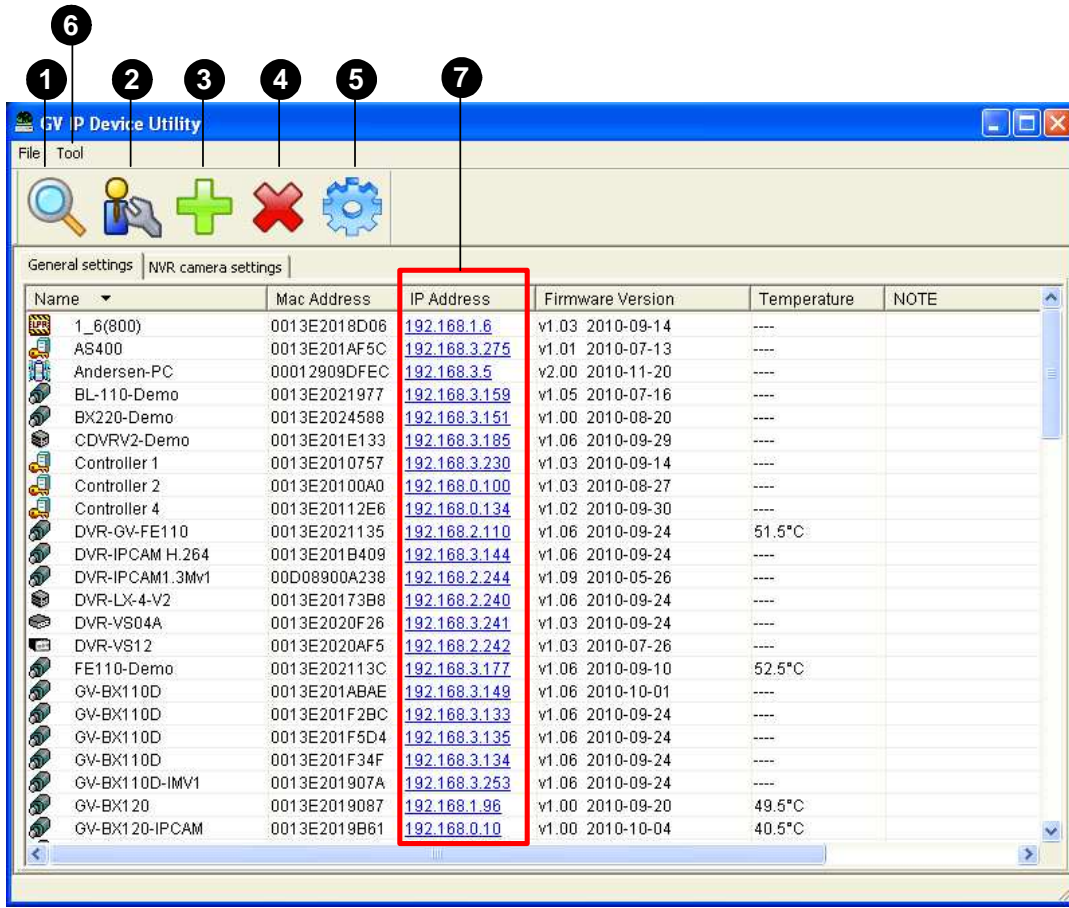
### Question

How to use GV-IP Device Utility to upgrade firmware and manage multiple GV-IP Devices simultaneously?

### Answer

The IP Device Utility can detect GV-IP devices in the LAN and allows you to quickly set the IP address of the device, upgrade firmware, export or import device settings and reboot the device. You can install it from the Software DVD of the GV-IP Device.

To start the GV-IP Device Utility, go to Windows **Start**, point to **Programs**, select **GV IP Device Utility**, and then run **GV IP Device Utility**. The window below appears and automatically searches for any GV-IP device under LAN.



The controls in the window:

No.	Name	Description
1	Search	Searches for available GV-IP devices under LAN.
2	Auto Set IP Address	Automatically assigns unused IP addresses on the LAN to the IP addresses with the same ID and Password.
3	Add	Adds an IP device to the list or import an excel file to add multiple IP devices. A template of the excel file is located in the folder where GV-IP Device Utility is installed.
4	Delete	Deletes the IP device from the list.
5	Configure	Specifies the network adaptor.
6	Tool (on the menu bar)	<ul style="list-style-type: none"> <li>■ <b>Configure:</b> Specifies the network adaptor.</li> <li>■ <b>Temperature Monitor:</b> Select the temperature unit and specify the temperature</li> </ul>
7	IP Address	Directs to the Web interface of the IP address.