

[FAQ]

How do I know the dynamic IP address of GV-IP Devices when using DHCP?

Article ID: GV13-12-26-t

Release Date: 2/26/2013

Applied to


GV-IP Devices

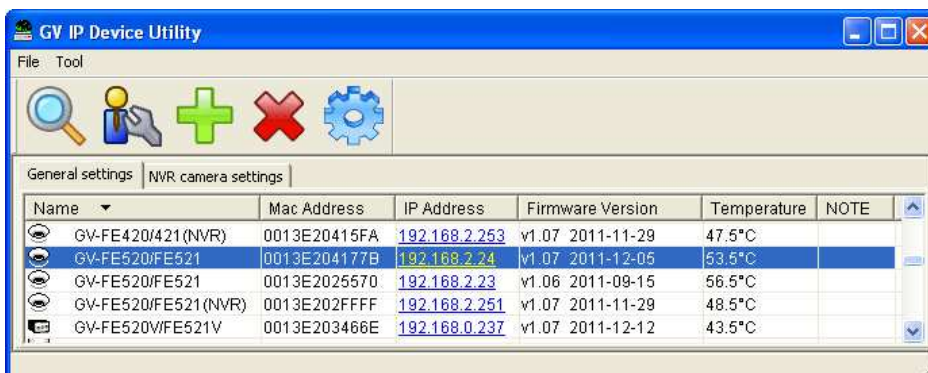
Question

How do I know the dynamic IP address of GV-IP Devices when using DHCP?

Answer

When the GV-IP Device has a dynamic IP address assigned by the DHCP server, you can use the GV-IP Device Utility to look up the IP address.

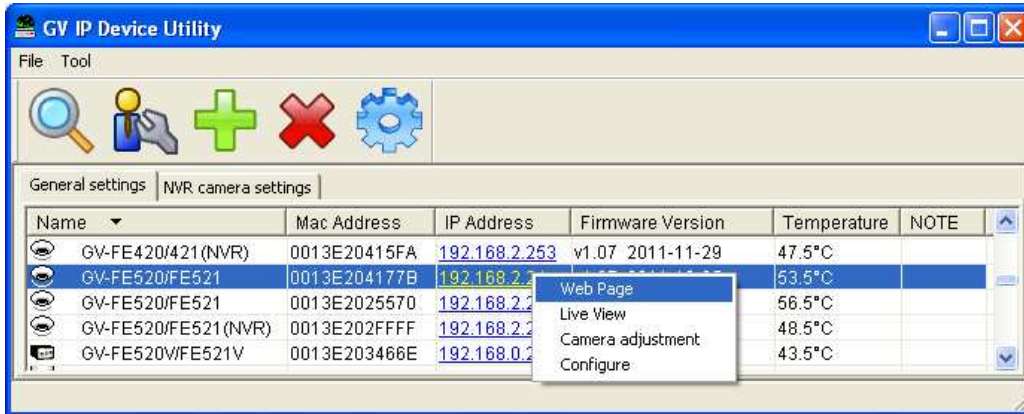
1. Install the GV-IP Device Utility program included on the Software DVD of the device.
2. On the GV-IP Utility window, click the  button to search for the IP devices connected in the same LAN. Click the **Name** or **Mac Address** column to sort.



Name	Mac Address	IP Address	Firmware Version	Temperature	NOTE
GV-FE420/421(NVR)	0013E20415FA	192.168.2.253	v1.07 2011-11-29	47.5°C	
GV-FE520/FE521	0013E204177B	192.168.2.24	v1.07 2011-12-05	53.5°C	
GV-FE520/FE521	0013E2025570	192.168.2.23	v1.06 2011-09-15	56.5°C	
GV-FE520/FE521(NVR)	0013E202FFFF	192.168.2.251	v1.07 2011-11-29	48.5°C	
GV-FE520/WFE521V	0013E203466E	192.168.0.237	v1.07 2011-12-12	43.5°C	

3. Use the MAC address to identify the device and see the IP address listed.

You can click on its IP address and select **Web Page** to access the Web interface. Type the default ID and password **admin** and click **Apply** to login.



Note: The PC installed with GV-IP Device Utility must be under the same LAN with the camera you wish to configure.
