

[FAQ]

How do I change the live view orientation?

Article ID: GV15-12-20-c

Release Date: 12/20/2012

Applied to

GV-IP Camera, GV-Video Server and GV-Compact DVR

Question

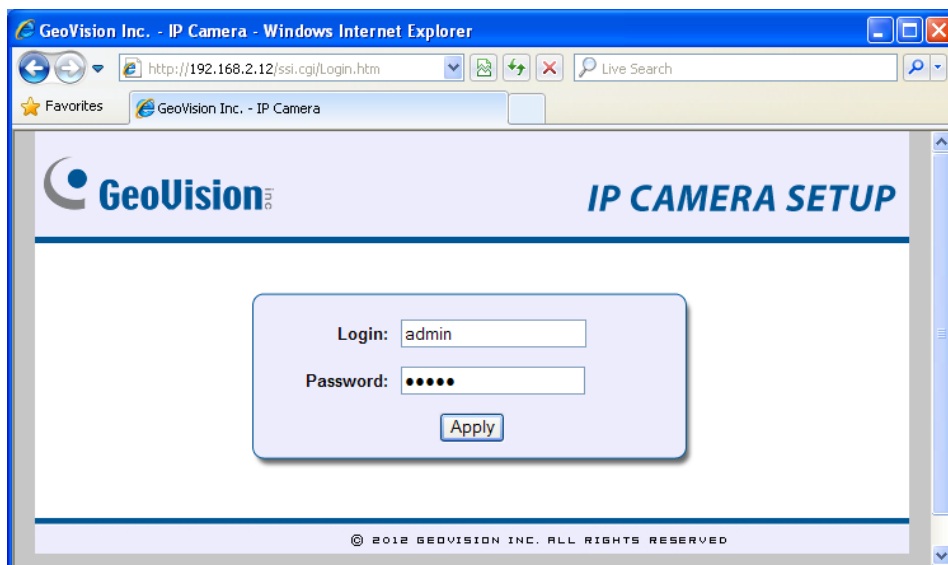
How do I change the live view orientation of my camera?

Answer

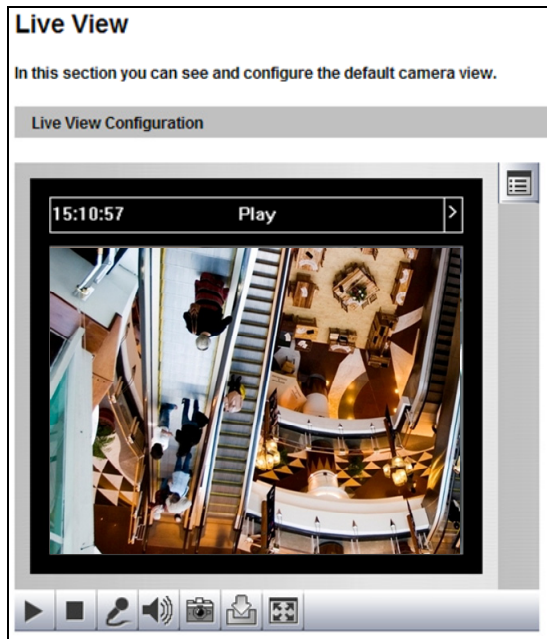
You can change the image orientation from the Web interface of your camera or from the GV-System to which the camera is connected.



From the camera's Web interface

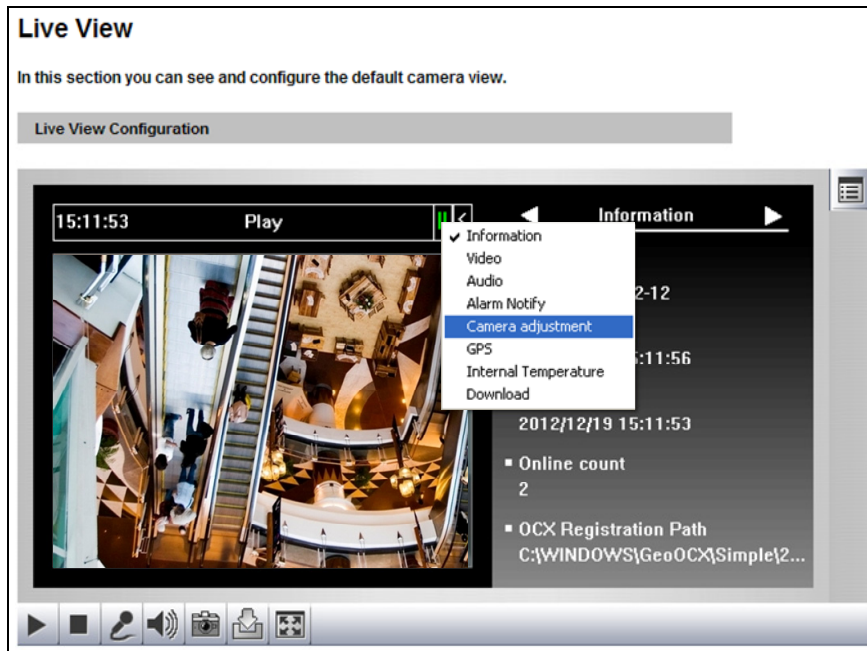
1. Open a Web browser and type the device's IP address. The login page appears.



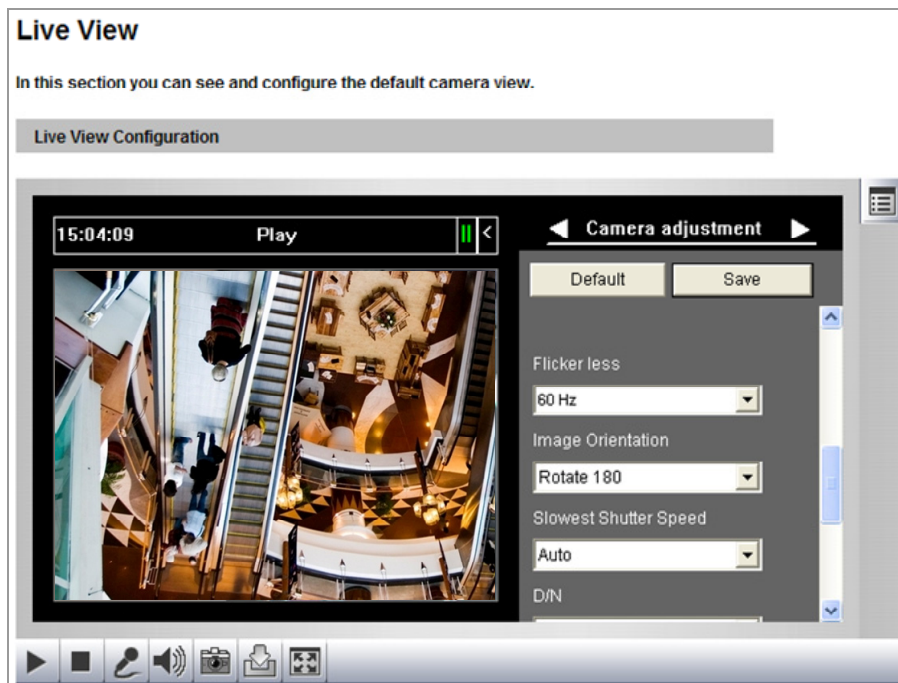
2. Type the ID and password to log in the device Web interface. The live view window appears.



3. On the live view window, click the **Arrow**  button to expand the live view window, click the **Menu**  and select **Camera Adjustment**.



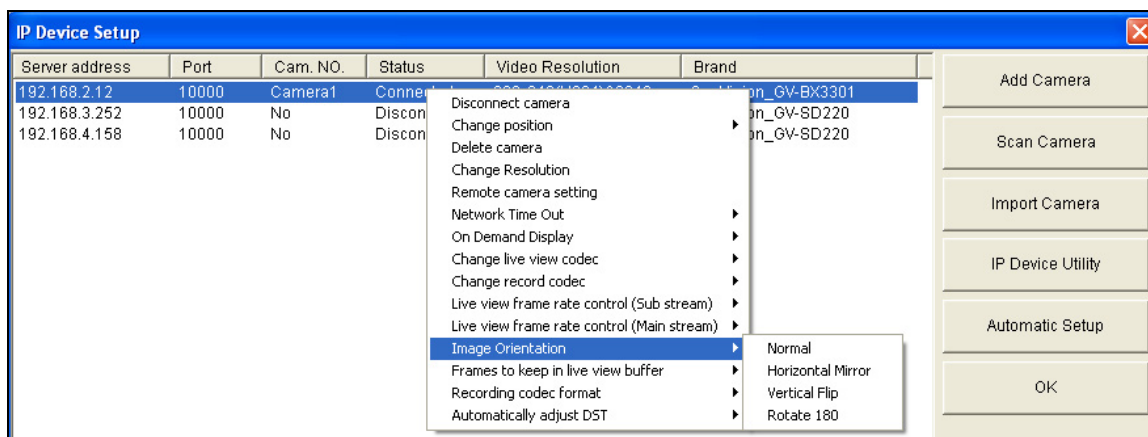
- From the Camera Adjustment page, you can adjust the image by selecting **Normal**, **Horizontal Mirror**, **Vertical Flip** and **Rotate 180** for **Image Orientation**. In this case, we select **Rotate 180**. This change takes effect immediately.



- Click **Save** to store your settings on the Camera Adjustment page to store your settings.

From GV-System

- On the GV-System main screen, select the **Configure** button, **System Configure**, **Camera Install** and **IP Camera Install** to access the IP Device Setup page.
- On the IP Device Setup page, right-click a GV-IP device and select **Image Orientation** and then select **Normal**, **Horizontal Mirror**, **Vertical Flip** or **Rotate 180** to adjust the image.



- Click **OK** to save the changes.