

[FAQ]

How do I change the HTTP and VSS port settings?

Article ID: GV15-12-21-c-2

Release Date: 12/21/2012

Applied to

GV-IP Camera, GV-Video Server and GV-Compact DVR

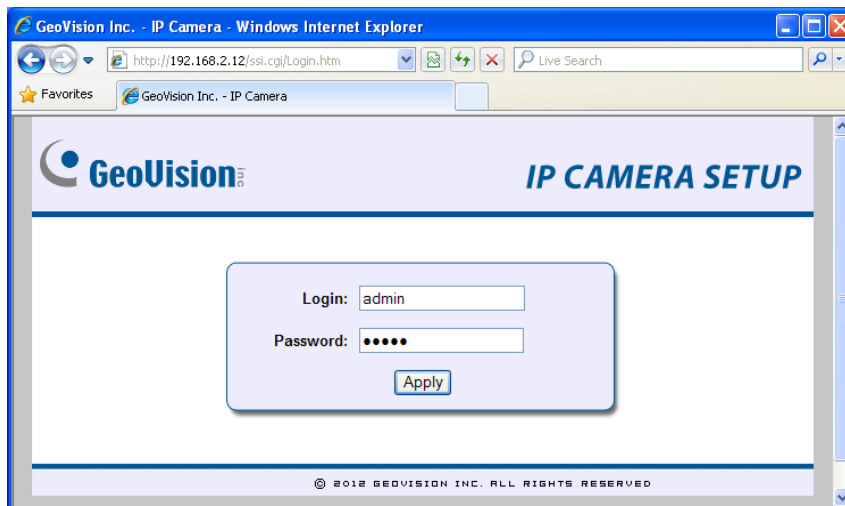
Question

How do I change the HTTP and VSS ports settings on GV-IP Camera, GV-Video Server or GV-Compact DVR?

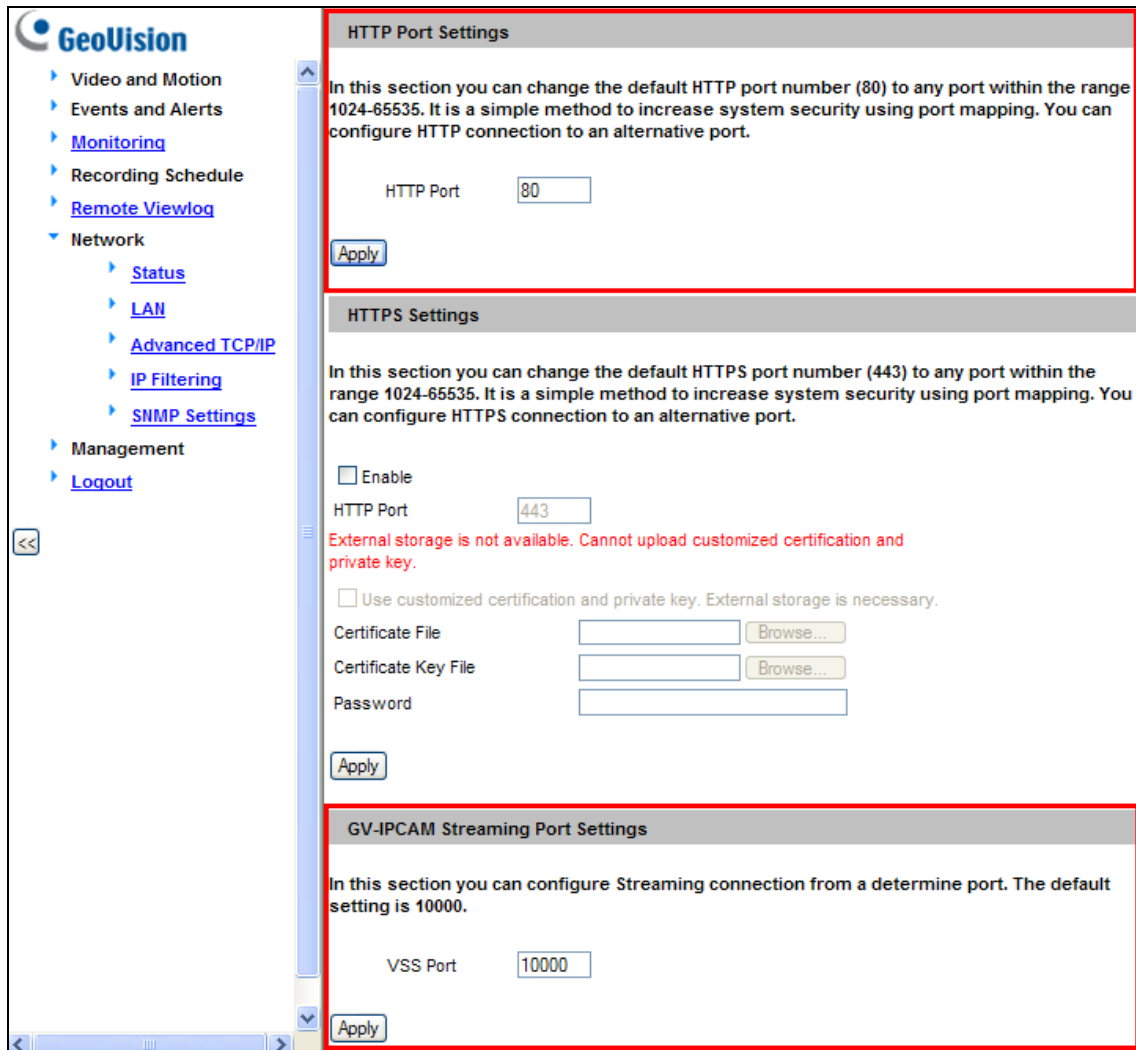
Answer

You can change the HTTP and VSS port settings from the device's Web interface.

1. Open a Web browser and type the device's IP address. The login page appears.



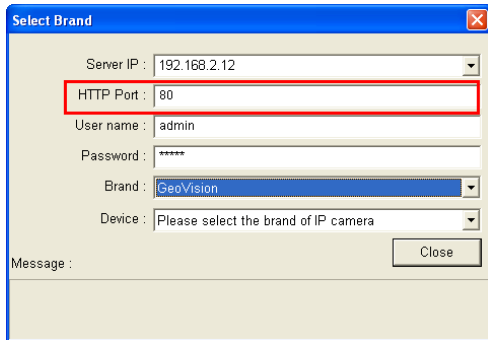
2. Type the ID and password to log in the device's Web interface. The live view window appears.
3. From the left menu, select **Network** and select **Advanced TCP/IP**. The Advanced TCP/IP page appears.
4. Scroll down to configure the HTTP Port Settings and Streaming Port Settings (VSS port). The following is an example from a GV-IP Camera.



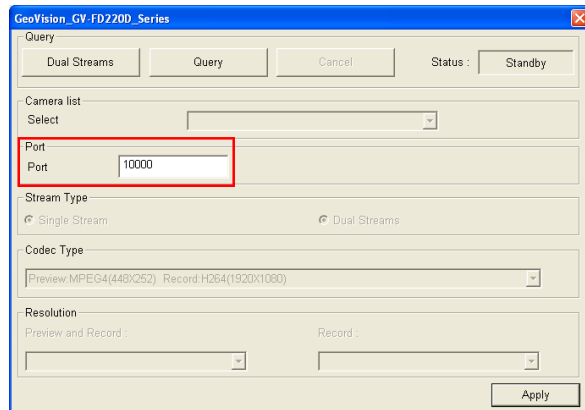
- **[HTTP Port Settings]** The HTTP port enables connection of GV-IP Camera, GV-Video Server or GV-Compact DVR to the web. For security integration, the Administrator can hide the device from the general HTTP port by changing the default HTTP port of 80 to a different port number within the range of 1024 through 65535.
- **[Streaming Port Settings]** The VSS port enables GV-IP Camera, GV-Video Server or GV-Compact DVR to be connected to GV-System. The default setting is **10000**.

Note: If you have changed the HTTP or VSS port settings on your GV-IP device, be sure to reconnect to the device again from GV-System using the new port settings.

1. On GV-System's main screen, select **Configure, System Configure, Camera Install** and **IP Camera Install** to enter the IP Device Setup page.
2. Select **Add Camera** to modify the HTTP Port and VSS port settings and reconnect to the device.



HTTP Port



VSS Port