

[FAQ]

How to Waterproof Vandal Proof IP Dome Camera

Article ID: GV3-14-08-28

Release Date: 08/28/2014

Applied to

GV-VD1530 / 2430 / 2530 / 3430

GV-VD1540 / 2440 / 2540 / 3440 / 5340

GV-VD2540-E / 5340E

Summary

The GeoVision Vandal Proof IP Dome Camera is designed to be waterproof and it adheres to the IP67 standard for dust and water protection. To ensure the camera performs its full capacity against water and dust ingress, adhere to the guidelines below to install the camera's components properly.

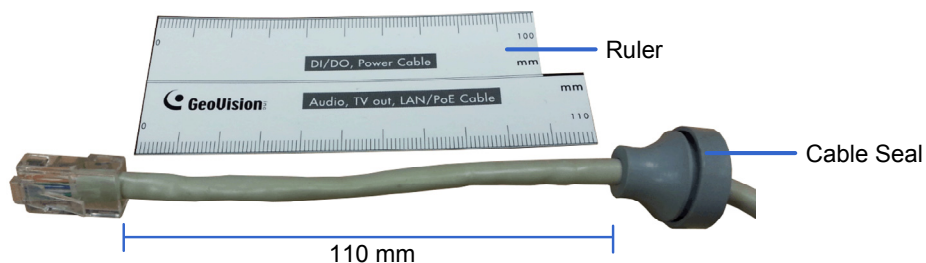
Check Your GeoVision Vandal Proof IP Dome

There are four ways to check if your Vandal Proof IP Dome is completely waterproof.

1. Waterproof the RJ-45 cable

Make sure the cable seal tightly seals the RJ-45 cable and the cable is not over-pulled. An over-pulled cable may cause water leakage from the space it created with the cable seal.

Thread the RJ-45 cable through the cable seal. Use the supplied ruler to measure and leave 110 mm from the RJ-45 connector to the rubber. This can avoid excessive cable length and cable buckling inside the camera housing.

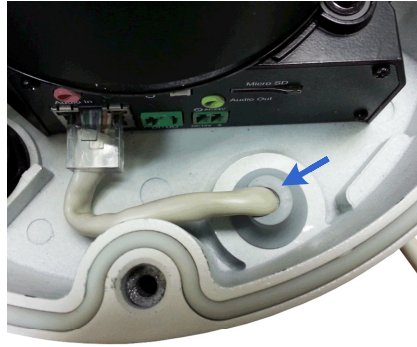


- **Inside the camera housing**

○ RJ-45 cable vertically threaded through the cable seal



✗ Space created



- **Rear of the camera**

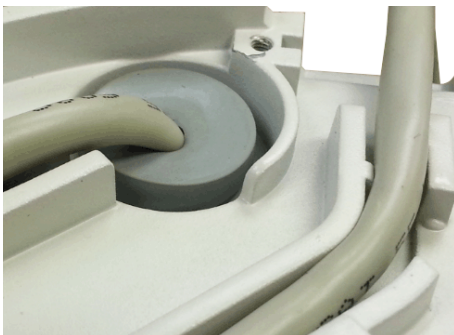
○



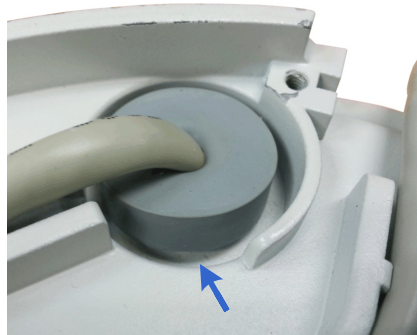
✗ Space created



○



✗ Cable seal not in place

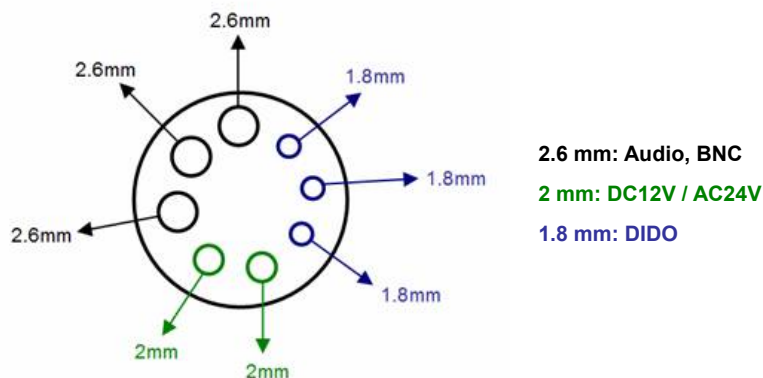


2. Waterproof the audio/BNC/power/DIDO cables

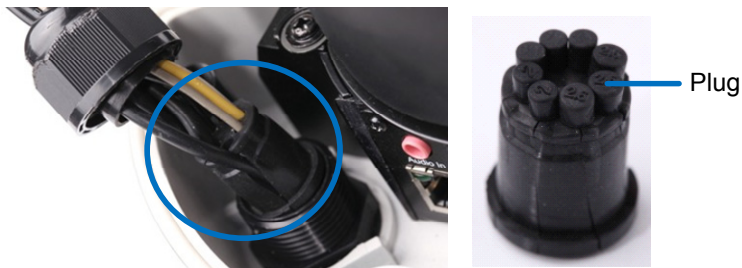
The conduit connector's plugs prevent water from entering the camera housing. Only remove the plugs you need and thread the audio/BNC/power/DIDO cables through the corresponding hole.



- Every plug has its designated cable. Only thread the assigned cable to the corresponding hole.



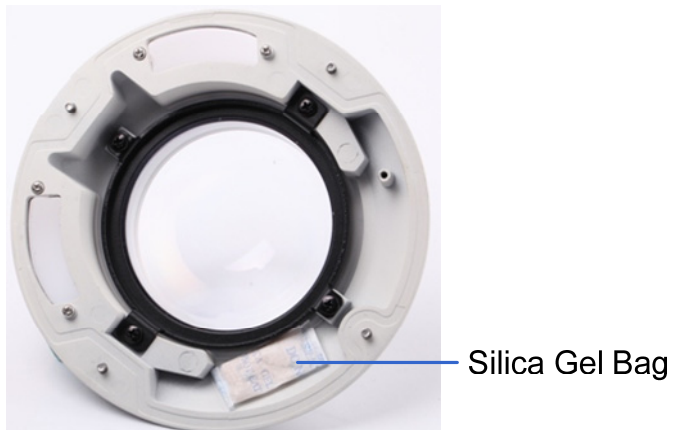
- Save the removed plugs if you shall need to replug them.



3. Replace the Silica Gel Bag

The silica gel bag loses its effectiveness when the dry camera is opened. To prevent the lens from fogging up, replace the silica gel bag every time you open the camera and conceal the silica gel bag within 2 minutes of exposing to open air.

For each newly replaced silica gel bag, allow it to absorb moisture for at least 5 hours before operating the camera.



4. Waterproof the camera

Secure the four screws properly.

