

## [FAQ]

# How to Upgrade a GV-Fisheye Camera from Firmware Earlier than V2.02 to Firmware V2.03 or later?

**Article ID: GV3-08-09-c**

**Release Date: 08/09/2012**

### Applied to

GV-Fisheye Cameras

### Question

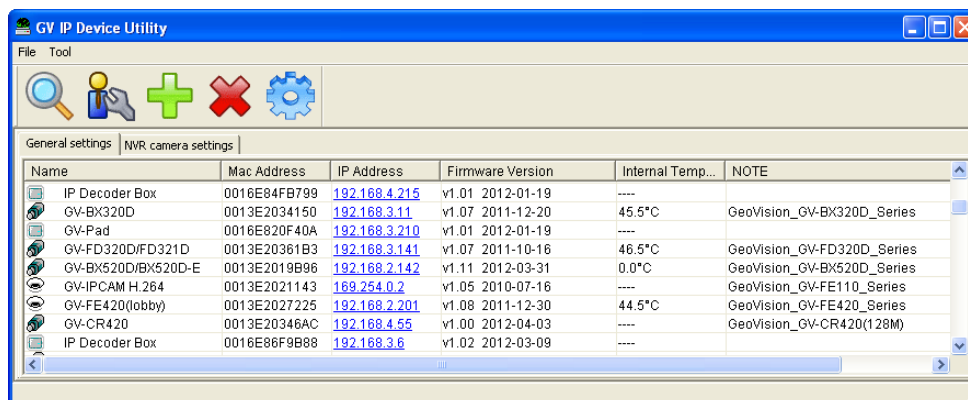
How do I upgrade a GV-Fisheye Camera from firmware earlier than V2.02 to firmware V2.03 or later?

### Answer

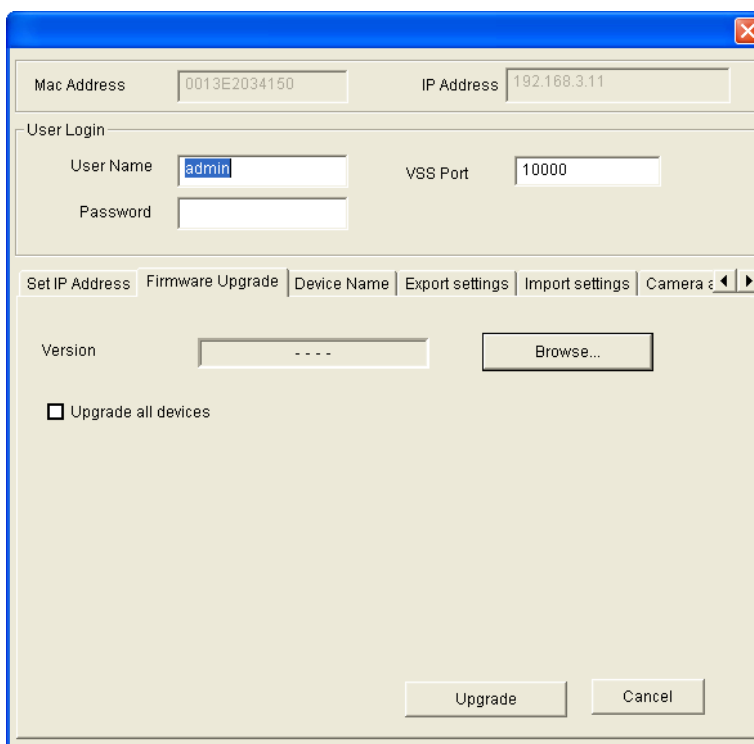
To upgrade the GV-Fisheye Camera from firmware earlier than V2.02 to firmware V2.03 or later, follow the steps below.

1. Make sure you have installed GV-IP Device Utility to the same LAN with your camera. To download GV-IP Device Utility, click <http://54.200.75.24/english/EncodeUrl3.aspx?source=http://dlcdn.geovision.com.tw/Software/DVD/FreeAP/InstallUtility.zip>
2. Download firmware V2.02:  
[http://pd.geovision.tw/neo/Firmware/V2.02/GV-FE420\\_V202\\_121120.zip](http://pd.geovision.tw/neo/Firmware/V2.02/GV-FE420_V202_121120.zip)

3. Upgrade your GV-Fisheye Camera to firmware V2.02 using the GV-IP Device Utility.
  - A. Double-click the **GV-IP Device Utility** icon. This window appears.



- B. Click **Browse** to search for your GV-Fisheye Camera.
  - C. Double-click the camera from the list and click the **Firmware Upgrade** tab.



- D. Click the **Browse** button to locate the firmware file (.img) saved at your local computer.
    - E. To upgrade all cameras of the same model in the list, check **Upgrade all devices**.
    - F. Type the password and click **Upgrade** to begin the upgrade.
4. Download the latest firmware from our website and follow steps 3B to 3F to upgrade your camera to the latest firmware using GV-IP Device Utility.