

[FAQ]

How to enable digital zoom in GV-SD200?

Article ID: GV12-12-05-k-3

Release Date: 12/05/2012

Applied to

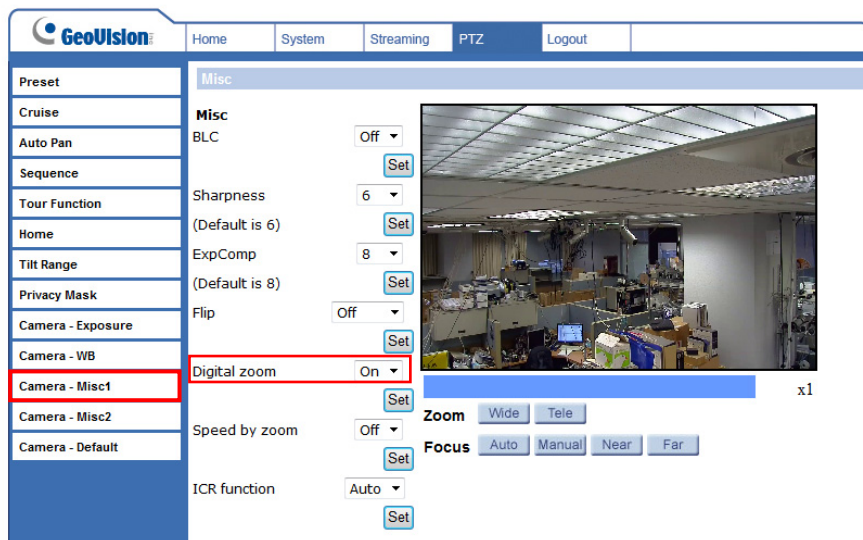
GV-SD200/GV-SD200-S firmware V1.0 to V1.02

Question

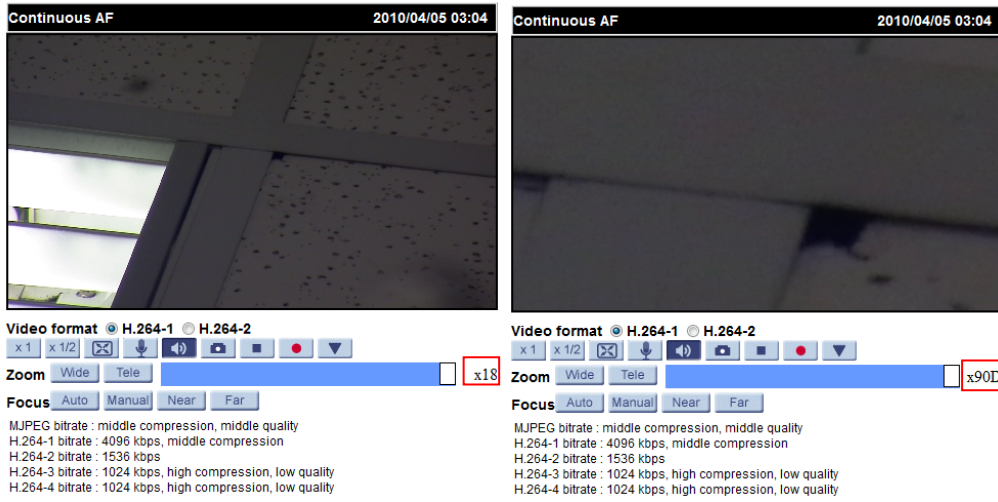
GV-SD200 supports 18X optical zoom and 8X digital zoom. Do you know how we derive the 8X digital zoom?

Answer

The default value of Digital Zoom is **Off**. You have to go to the Web interface to change the setting. Click the **PTZ** tab and select **Camera-Misc 1** from the left menu. Find the **Digital Zoom** drop-down list and scroll it to **On**.



When the camera reaches the limit of its optical range, it will automatically switch to digital zoom.



optical zoom

digital zoom