

[FAQ]

Recording status for GV-Edge Recording Manager

Release Date: 1/29/2015

Applied to

GV-ERM v1.0

Question

The recording status for GV-Edge Recording Manager

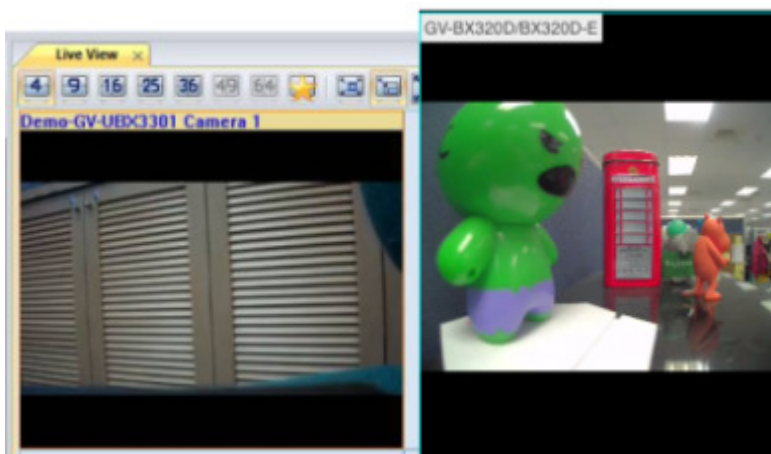
Answer

Edge Recording Manager has 3 type of recording status and indicate in label of camera name.

They have yellow, white, green and red. There are some examples below to illustrate.

When GV-ERM v1.0 is not monitoring, it will show

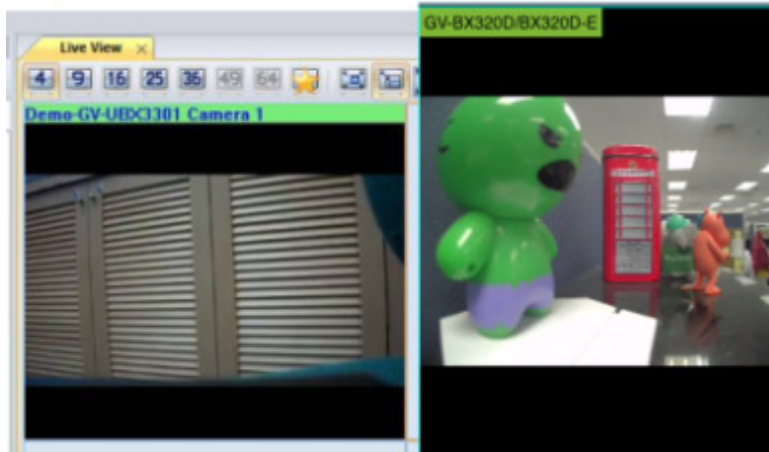
For PC version (left side), it is yellow. For Mac version (right side), it is white.



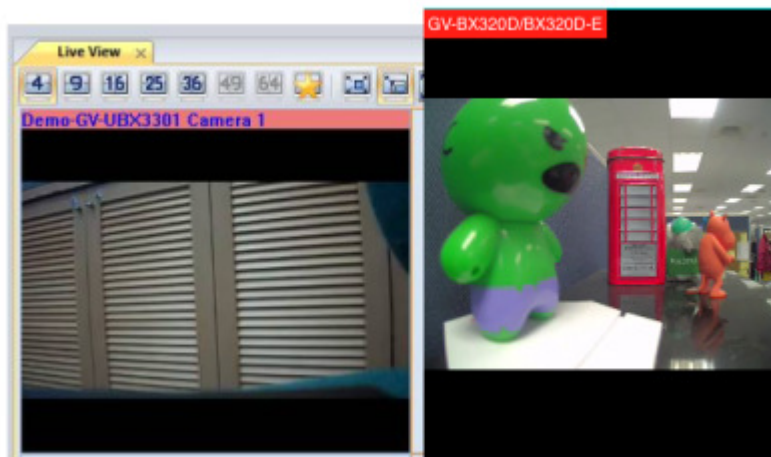
When GV-ERM v1.0 is monitoring but not recording, it shows

For PC version (left side), it is green. For Mac version (right side), it is green.

Example, it is in motion detection mode



When GV-ERM v1.0 is monitoring and recording, it will show
For PC version (left side), it is red. For Mac version (right side), it is red.
For instance, it is on RTC mode.



For any question on the information provided, please feel free to submit your question to our support window at support@geovision.com.tw