

## [FAQ]

# Error message “Driver installation failed” after installing GV-Combo Cards in 64-bit OS

Article ID: GV28-13-1-2-t

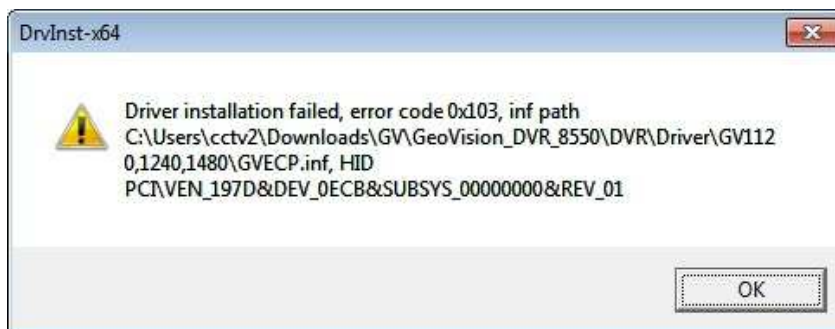
Release Date: 1/2/2013

### Applied to

GV-Combo Cards (GV-1120, GV-1240 and GV-1480)

### Question

Why does the error message “Driver installation failed” appear after I install the GV-1480 Card in 64-bit Windows 7?



### Answer

GV-1480 Card and other GV-Combo Cards only support 32-bit operating systems. The error message appears when the capture card is incompatible with the operating system used.

To install in 64-bit operating systems, you would need a GV-Combo A Card (GV-1120A, GV-1240A and GV-1480A) or GV-Combo B Card (GV-1120B, GV-1240B and GV-1480B).