

## [FAQ]

# How can I choose which camera to send to Center V2 when Motion Detection triggers?

**Article ID: GV13-03-06-k**  
**Release Date: 03/06/2013**


### Applied to

GV-System V8.5.0.0 and later

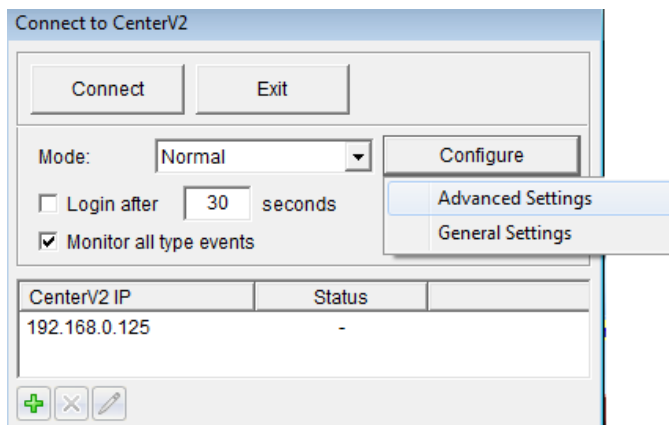
### Question

How can I choose which camera to send to Center V2 when Motion Detection triggers?

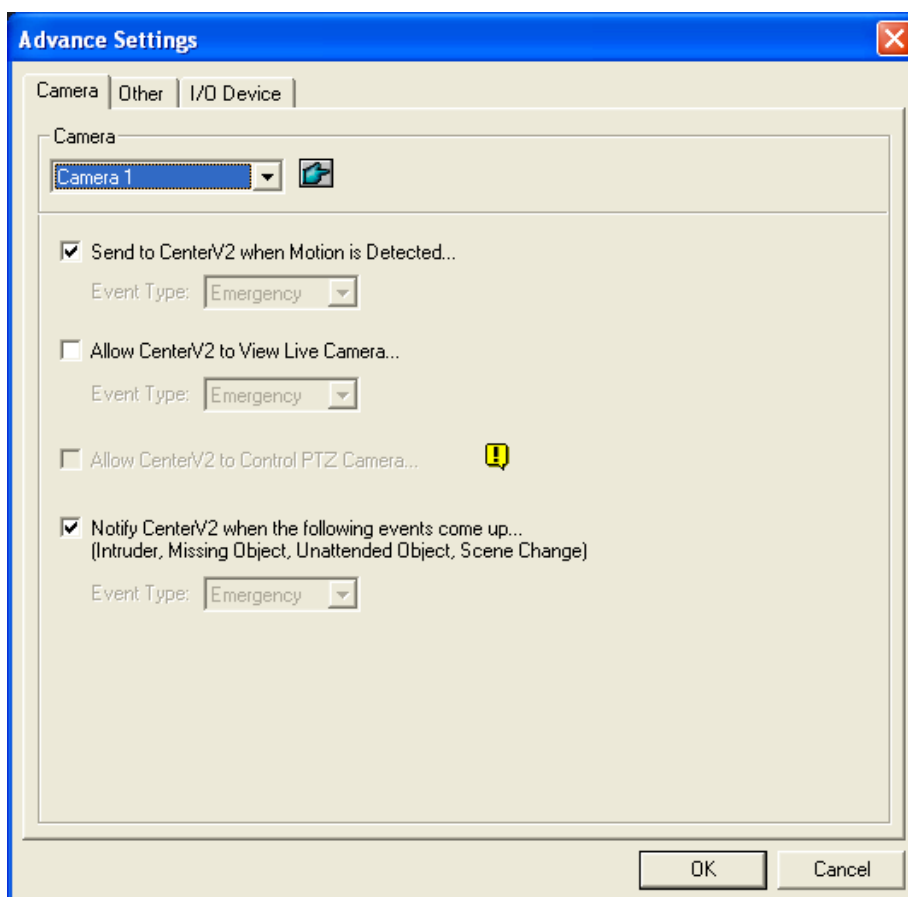
### Answer

1. Click the **Network** button  from the main system and select **Connect to Center V2**.

2. If the Center V2 connection information has already been saved, the below window appears. Click the **Configure** button and select **Advanced Settings**.



3. From the **Camera** drop-down list, select the camera you want to configure



4. To enable sending images to Center V2 upon motion for the selected camera, select **Send to CenterV2 when Motion is Detected**. If the option is already selected and you do not want to send images of this camera to Center V2 upon motion, un-tick the option.
5. Click **OK**.