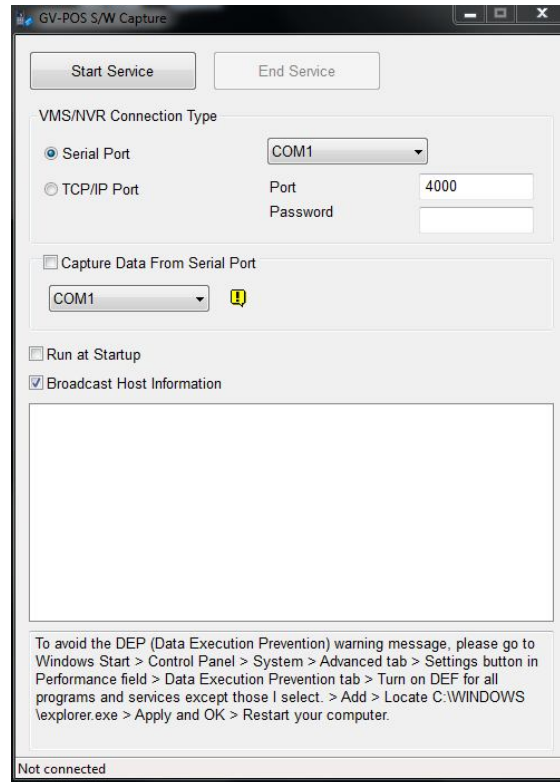
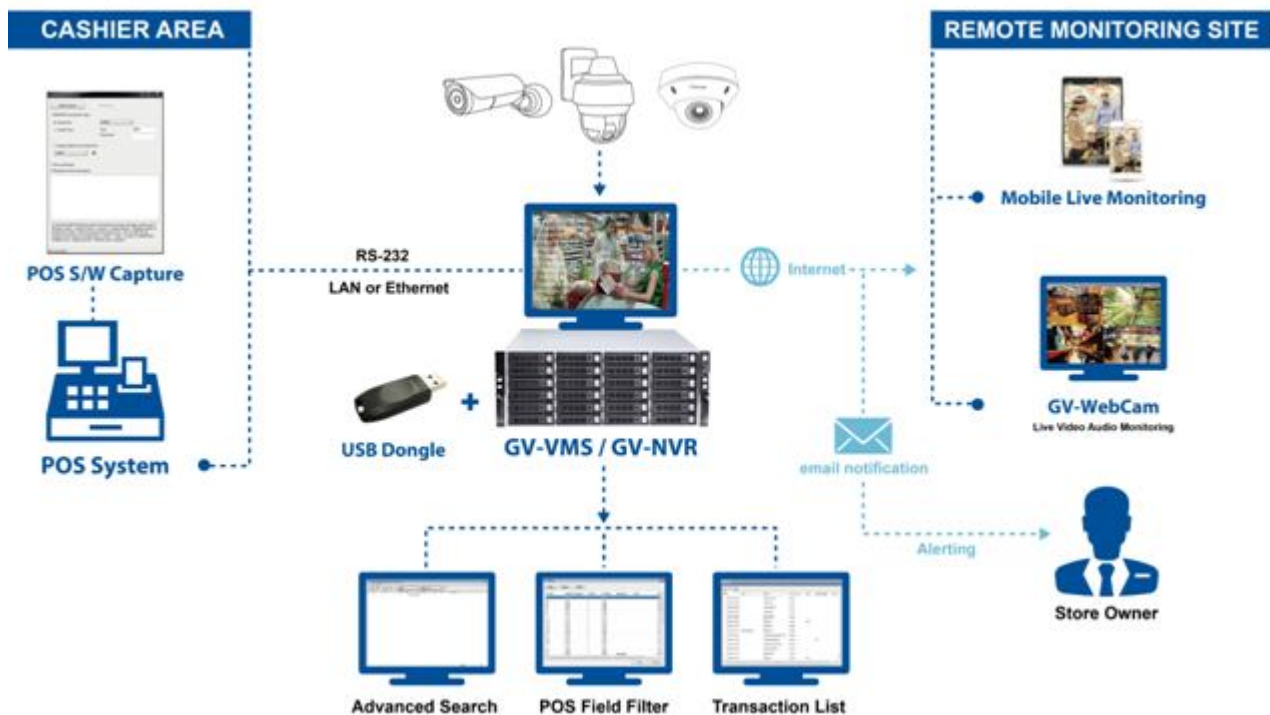


GV-POS S/W Capture



INTRODUCTION

Using the GV-POS S/W Capture, you can directly connect the GV-DVR / NVR / VMS to the POS device which is of Windows system generating RAW or EMF file format. The POS transaction data is transferred to GV-DVR / NVR / VMS via a RS-232 serial cable or TCP/IP connection. The transaction data will be overlaid on live images or recordings.



Specifications		
Supported POS Device Type		Windows based (with RAW or EMF file format)
Software		GV-POS S/W Capture
Hardware		GV-USB Dongle with 1, 2, 4, 8, 12, 16 or 32 port(s)
Supported Software		GV-DVR / NVR / VMS
Max. number of POS connected to GV-System	Serial Port Connection	4
	Network connection	16 for GV-DVR / NVR 32 for GV-VMS
<p>Note:</p> <ol style="list-style-type: none"> It is required to install the program GV-POS S/W Capture on the POS device. The program can be found in the Surveillance Software DVD. All specifications are subject to change without notice. 		